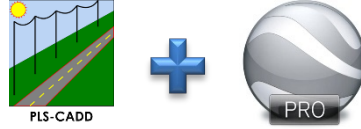
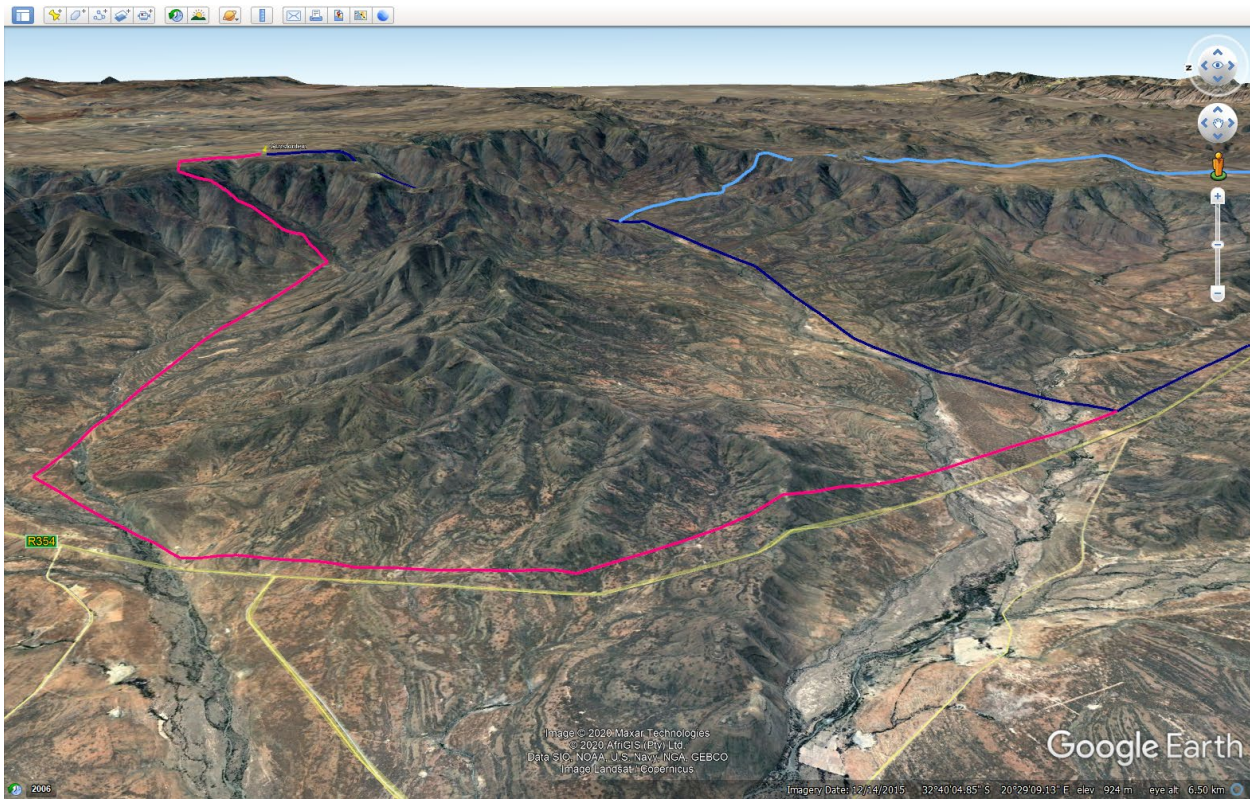


PLS-CADD: Google Earth Integration Tips



[Google Earth](#) is an invaluable tool when working with linear infrastructure such as overhead power lines. The benefits of using Google Earth go beyond simply visualizing the line in 3-Dimensions and give the following possibilities:

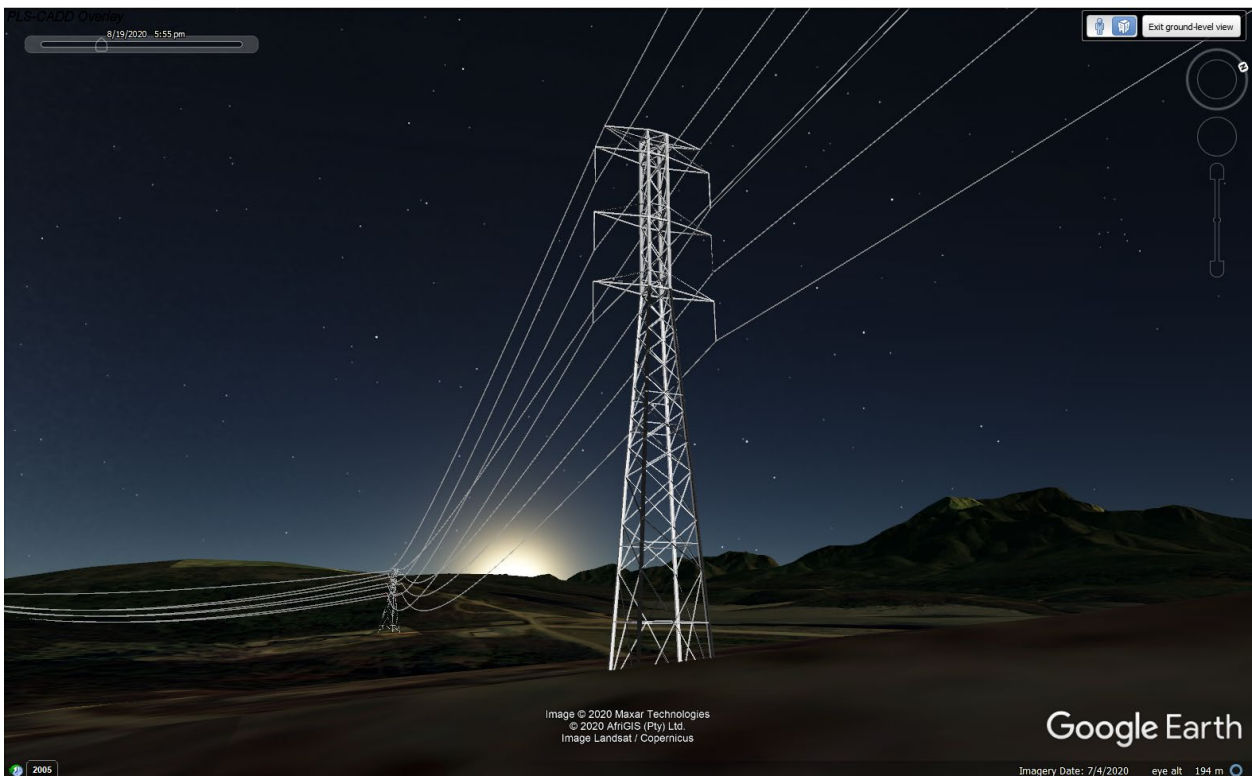
Route / Corridor Selection and site access planning:



“Virtual” Site visits – using Street View functionality



Public approval / Visual impact studies for Environmental and Permitting Applications – and this really helps landowners visualize the type and scale of infrastructure planned to be placed on their property, especially when coupled with the 3D imagery that Google is rolling out (made using photogrammetry):



Google Earth is beneficial for use because it is free software (the standard version of the desktop program is now Google Earth Pro - since July 2017), thus anyone can open and view the *KML* or *KMZ* files.

Coupling **PLS-CADD** with Google Earth allows the design outputs from Power Line Systems' powerful and industry leading structural, spatial, and electrical design features to be visualized by anyone, in an immersive and realistic way on any device.

This technote discusses how to:

- Export the 3D model of the line to Google Earth
 - Hints and tips to get the best output experience are offered
- Create various design outputs and reports that can be exported directly to Google Earth.
- Import data (such as line routes) into PLS-CADD from a *KML* or *KMZ* file.

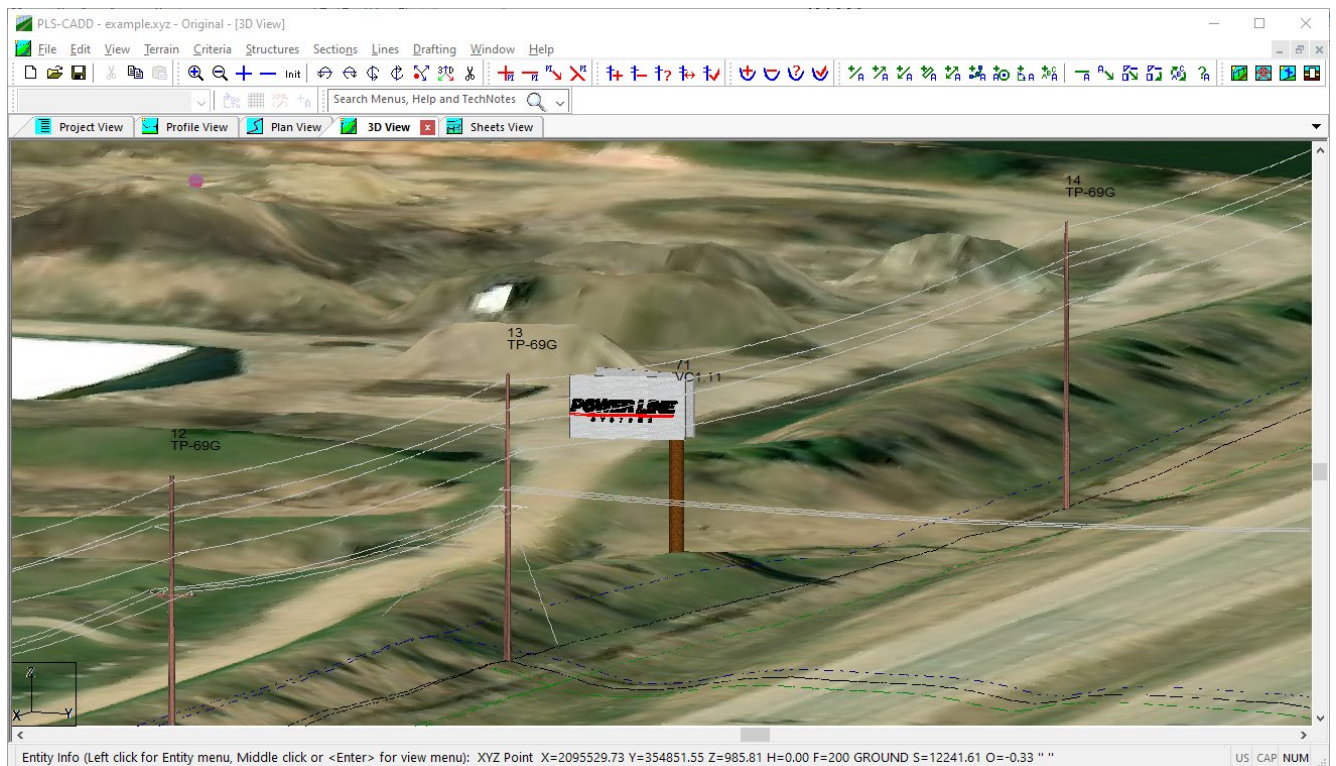
Export your project to a KML/KMZ

It has been possible to visualize your models in Google Earth since Version 8 of **PLS-CADD**. With the release of version 16.50 these capabilities have been significantly improved and allow for more project information being visible within Google Earth.

Create the KML/KMZ

To create a KML/KMZ file of your project, here are the step by step instructions and some tips for making best use of this feature:

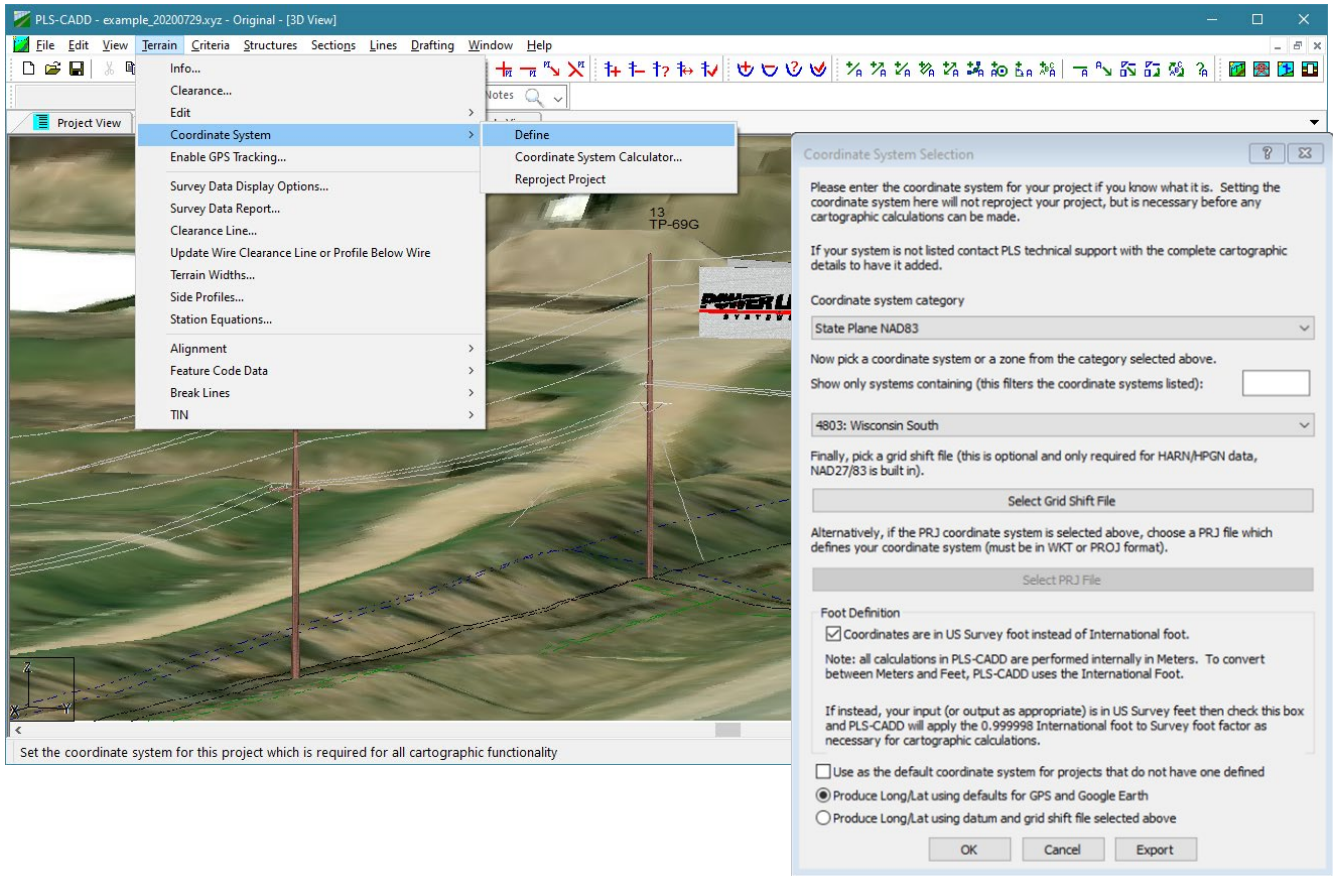
- **Use Version 5 or newer of Google Earth:** Everything demonstrated below uses Version 16.50 of **PLS-CADD** and Version 7.3.3.7721 of Google Earth. You can download Google Earth [here](#).
- **Open your project in PLS-CADD**



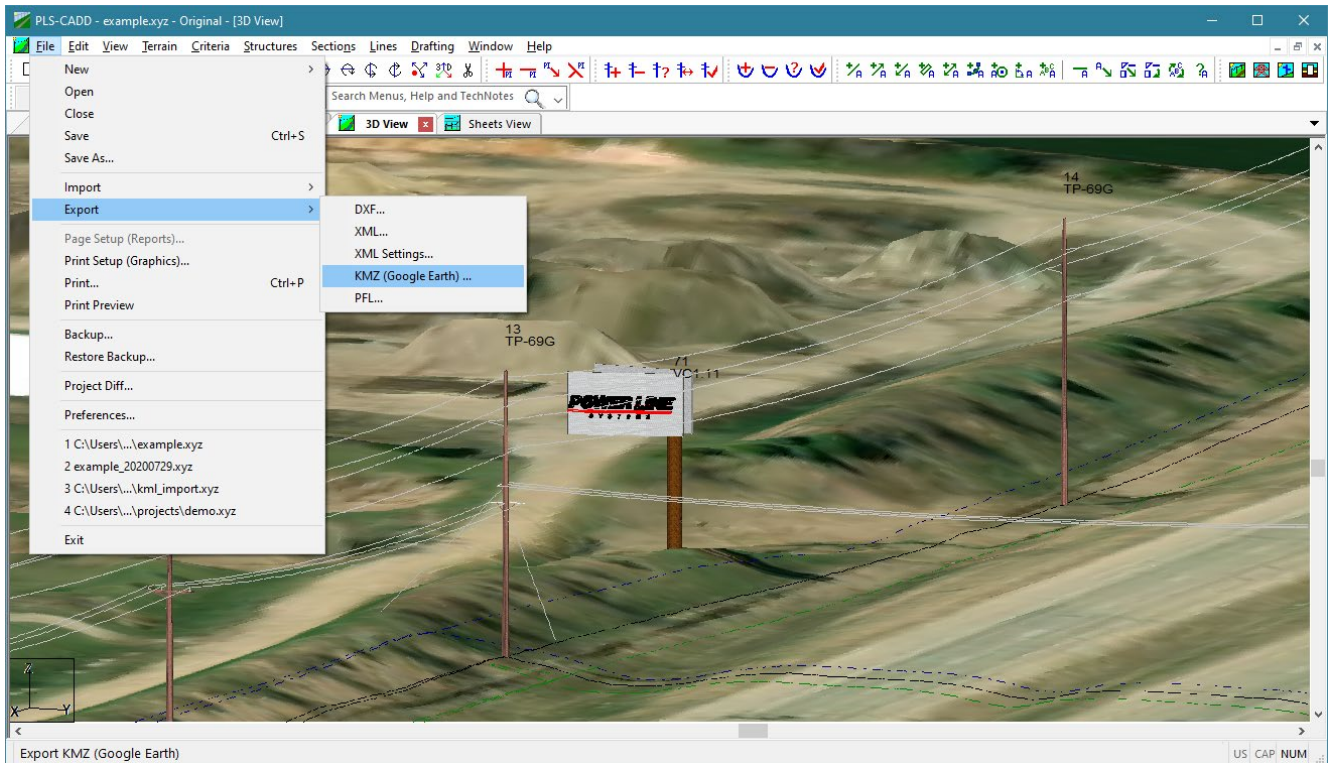
Note:

- *Best results come from exporting the 3D view, as typically what is visible on the screen in the current active window will be exported, so if you export from the Plan view you will see the alignment & right-of-way lines and PI Symbols.*
- *Some features don't transition well from PLS-CADD to the KML/KMZ file. For a pleasant aesthetic in the KML/KMZ it is a good reminder that typically what is visible in the active view will be exported. This includes Cable Attachment Points symbols, TIN surfaces and Markers.*

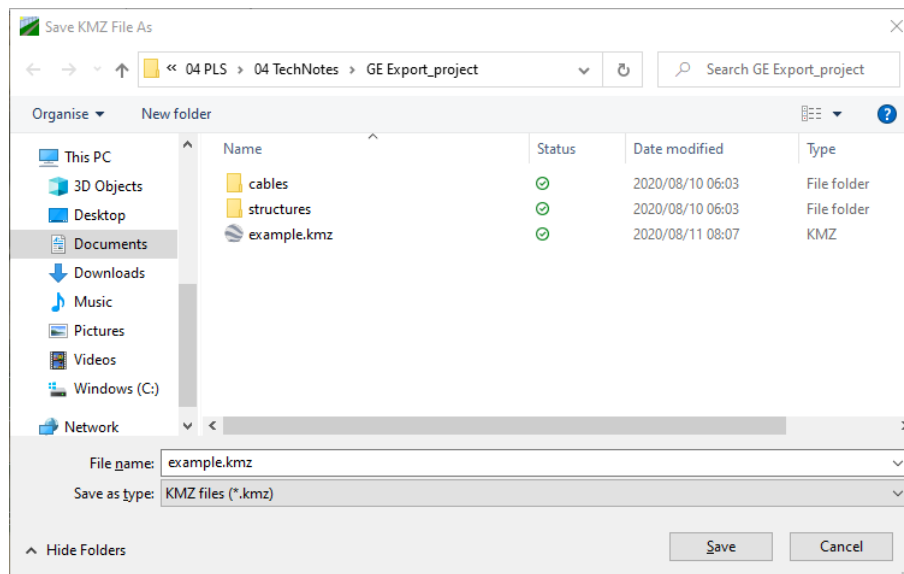
- Ensure that the project coordinate system is defined - This is controlled under **Terrain/ Coordinate System/ Define**
 - *If you do not know what coordinate system to use, we advise that you contact the supplier of your survey data. Unfortunately XYZ point data does not have the coordinate system information built into it, so it is not possible for PLS-CADD to automatically detect and assign a coordinate system definition.*



- **Export a KMZ** - The Google Earth model is called a "KMZ" file and can be exported from PLS-CADD using the **File/ Export/ KMZ (Google Earth)** command.



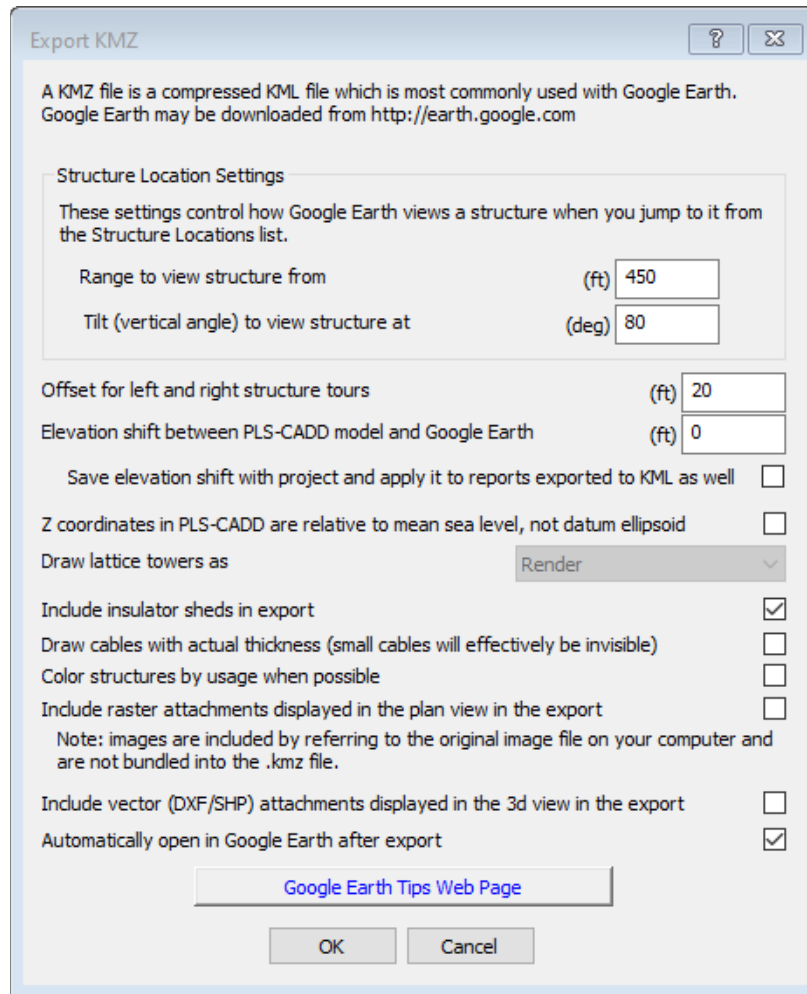
- **Name your KMZ** - Enter a name for your KMZ and select a folder to save it in.



- *If the Cable attachments are currently displayed, then you might receive a **KML Aesthetics Warning** indicating less than desirable aesthetics of the KML/KMZ file. To turn off the display of Cable Attachments you should deselect this option under the **Drafting/ Show Cable Attachment Points** menu.*

i KML Aesthetics Warning
 Cable attachments are currently displayed which is ugly in Google Earth. Use Drafting/Show Cable Attachment Points to toggle this off
 PLS-CADD

- **Select KMZ Export Options**



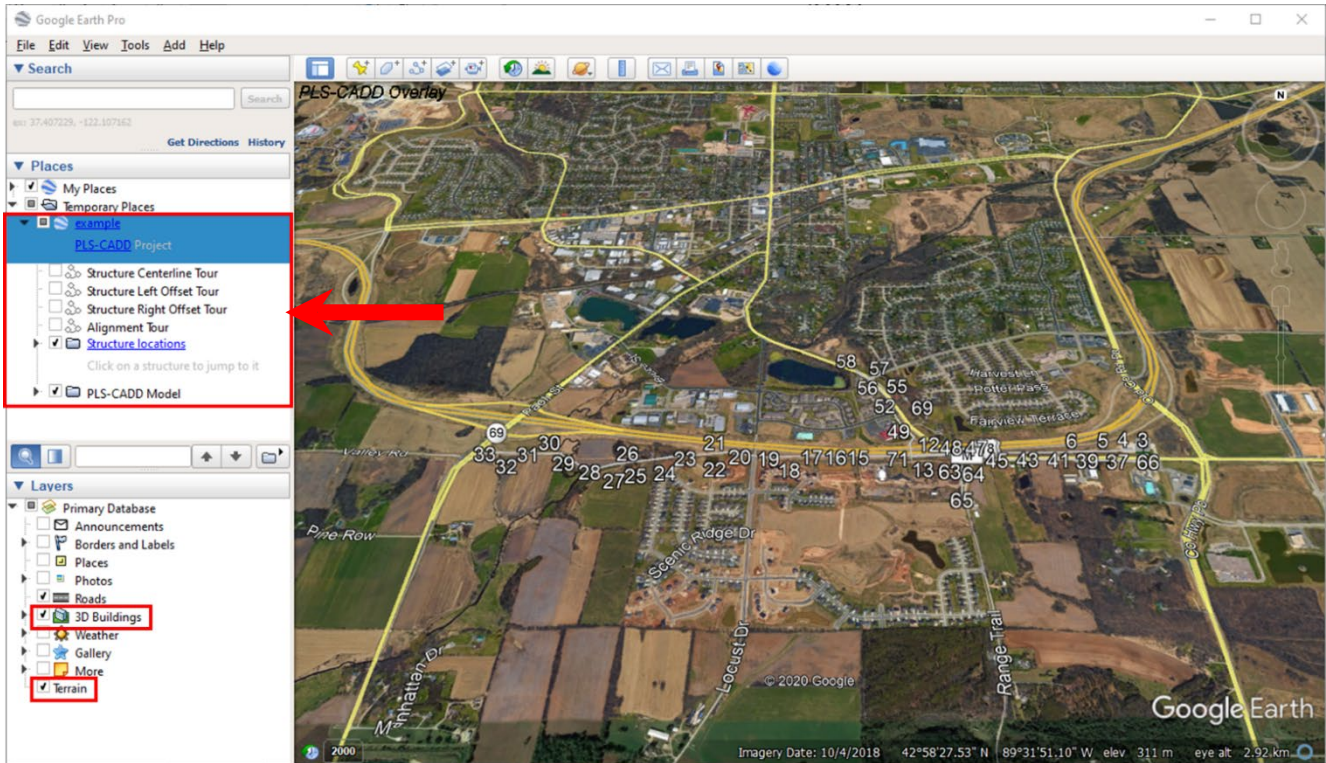
- The *Structure Location Settings* have inputs for *Range to view structure from* and the *Tilt*. We suggest you leave these values at the default settings. These settings control how Google Earth views a structure when you jump to it from the Structure Locations list.
- You can choose the offset distance for the left and right structure tours (which you will see later in Google Earth). We recommend that you set this slightly larger than your maximum conductor offset (to simulate a helicopter flying as close to the line as possible).
- In some cases, the vertical datum used on your project may not be the same as what is used by Google Earth. The *Elevation shift between PLS-CADD model and Google Earth* input allows you to account for this. If your structures appear to be "floating" when you go to Google Earth, you can put a negative number in here to lower the entire line. Of course, the opposite is true if your line is buried. There is also an option to *save the elevation shift with the project and apply it to reports exported to KML as well*. If selected the elevation shift will be saved with the model and used for KML exports of reports and exports of the geometry.

- There is an option that allows you to define the *Z coordinates in PLS-CADD are relative to mean sea level, not datum ellipsoid*. If selected the elevations in the KMZ will be equal to the Z value in PLS-CADD plus and elevation shift entered above.
- There is an option to *Draw lattice towers as Line, Wireframe or Render structures*. Rendered structures can slow down Google Earth loading, but the performance has improved in recent versions (if the KMZ file is slow to load then you should investigate using Wireframe or Line type lattice structures).
- If selected the option *Include insulator sheds in export* will show the insulator sheds within the KMZ. It will also increase the size of the KMZ. If this option is not selected the insulators will be shown as a cylinder.
- The option to *Draw cables with actual thickness (small cables will effectively be invisible)* that when selected will use the actual cable width and cables may be difficult to see in Google Earth.
- There is an option to *Color structures by usage when possible*. This option will show the structures by % usage instead of the material. To activate this option, you will first need to run a structure usage report and then select this option when exporting the KMZ.
- You can opt to *Include any raster attachments displayed in the plan view in the export* you may have attached to your PLS-CADD project for use in Google Earth. Unfortunately, Google Earth does not handle detailed imagery as well as PLS-CADD does, so you may need to uncheck this option if navigating your model in Google Earth is slow.
- You can select to *Include vector (DXF/SHP) attachments displayed in the 3d view in the export*.
- You can also *Automatically open in Google Earth after export* and zoom directly to your line by leaving the last option checked.

*Please Note: This is an example project, and while located in the same space as existing facilities it is not an exact representation of the actual facilities or their capabilities

View the KML/KMZ

Once you click the OK button above (assuming you have left the *Automatically open Google Earth after export* option selected), you will be taken directly to your line in Google Earth.



- The KMZ file will load by default in *Temporary Places* in the Places tree control.
- The KMZ file contains:
 - Structure Tours (Centerline, Left Offset, Right Offset and an Alignment Tour).
 - Structure Locations:
 - This shows a hyperlink to each structure position.
 - If Method 1 or stick structures are used, then PLS-CADD will add a small icon at the base of the structure.

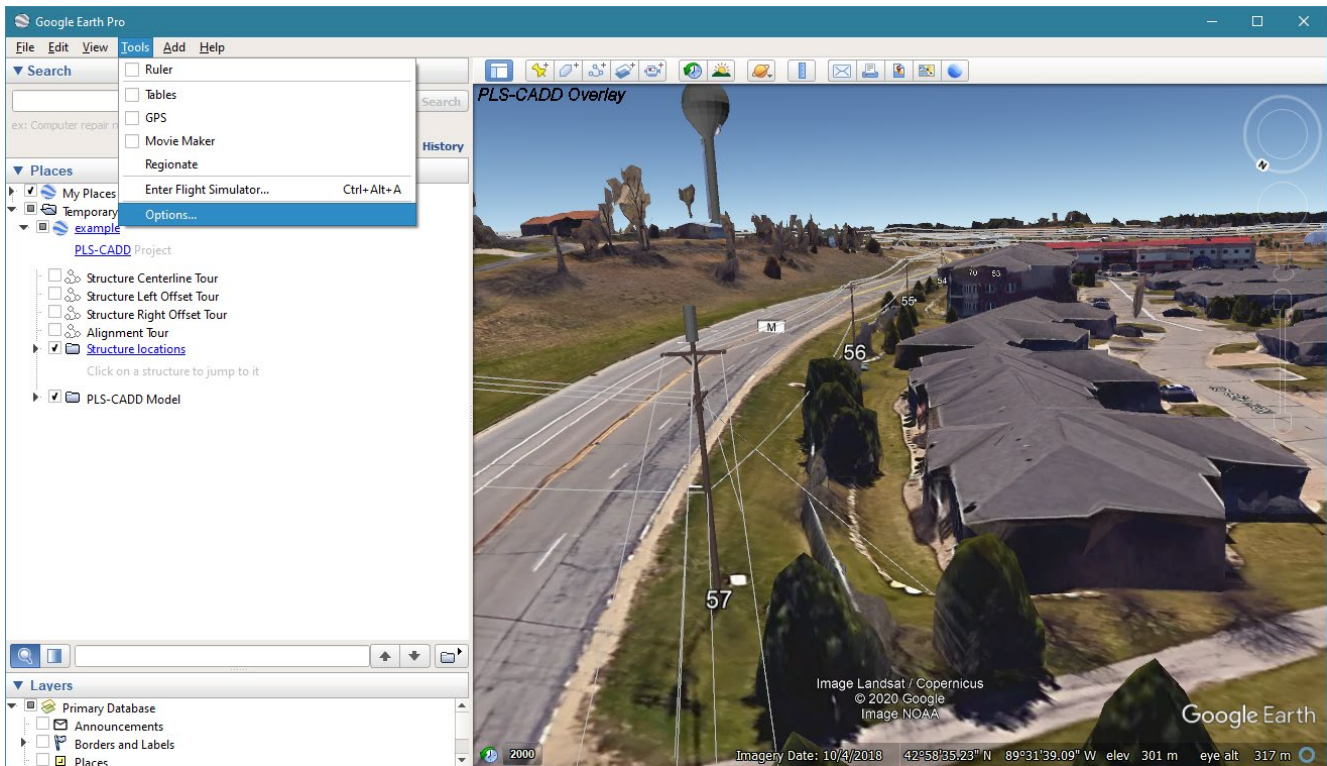


- *Double clicking on the structure number* takes you directly to that structure in the model.
- PLS-CADD Model, which comprises of:
 - Structures:
 - A folder for each structure in the model with the graphical elements indicated, which can be switched on or off independently.
 - Sections:
 - A folder for each section of wire on the line, which can be switched on or off independently.
 - A PLS-CADD overlay image to appear in the Top Left corner of the Google Earth screen.
- It is possible to Export Multiple Lines:
 - You can load (File / Open) multiple KMZ files into Google Earth, so that you can see multiple models at one time. Note that each project will now appear on the Temporary Places tree on the left.
- Remember that, to see rendered structures in Google Earth, you must have used **PLS-POLE** and/or **TOWER** to model your structures in **PLS-CADD** first. Otherwise, you will just see stick structures and wires.
- If you don't have a project handy and want to immediately try this feature out, download this sample KMZ file.

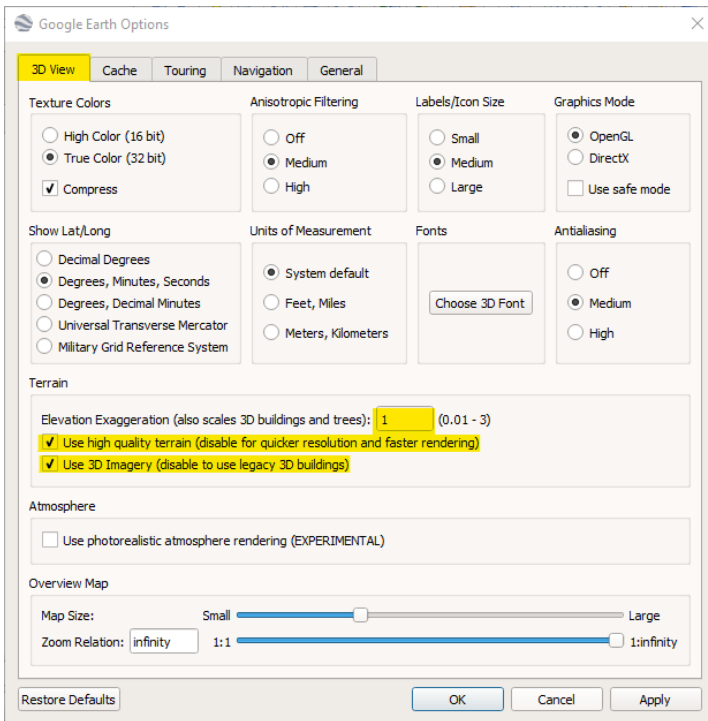
*Please Note: This is an example project, and while located in the same space as existing facilities it is not an exact representation of the actual facilities or their capabilities

Google Earth Settings

To ensure the best possible experience in Google Earth when viewing the line model and to leverage the ability to launch **PLS-CADD**, **PLS-POLE** and **TOWER** direct from the KMZ the following settings are recommended. These are primarily accessed under **Tools/ Options**.



But also make sure that *Terrain* and *3D Buildings* are checked in the Layers tree control in the lower left corner of Google Earth so that you are viewing the KMZ file in the full 3D receiving environment.



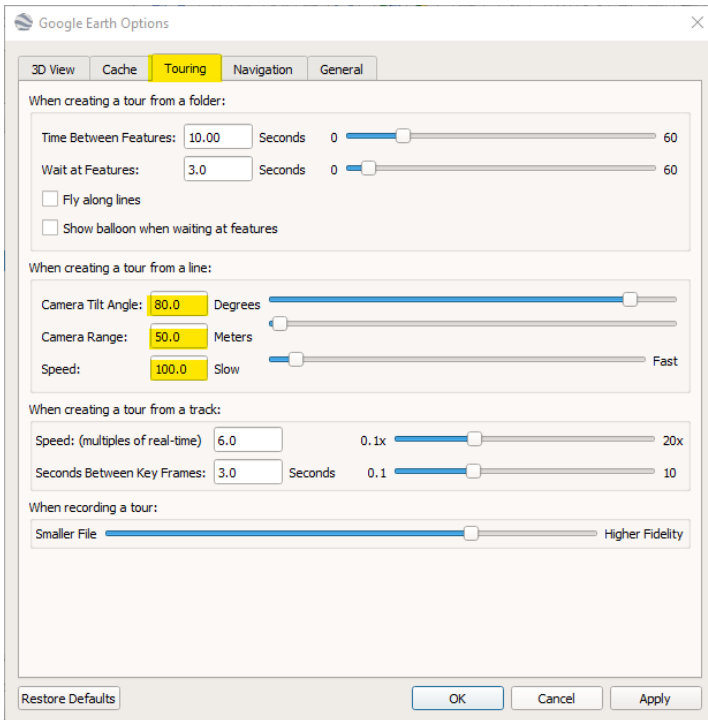
3D View tab:

The *Elevation Exaggeration* should be set to 1 to get an undistorted view of your structures and sags.

To make Google Earth's terrain model a better match for your **PLS-CADD** model, select the option to *Use high quality terrain*.

Also select the option to *Use 3D Imagery* this will use the newer photogrammetry generated 3D surface. If you disable this setting you will use the legacy 3D buildings where available).

You can select the Units of Measurement and the format for coordinates and a few other options.



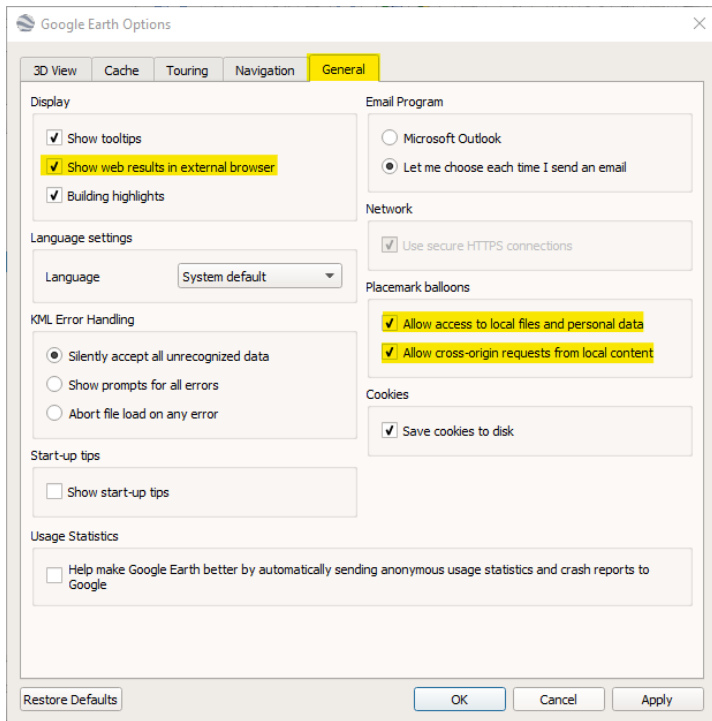
Touring tab:

You can set the *Camera Tilt Angle*, *Camera Range* and *Speed* as well as other options.

Camera Tilt Angle of 75 to 80-degree tilts appear to work best for most lines.

Camera Range is a variable, depending on the size of your structures and their spacing.

Also note that when a Tour is recorded you can prioritize a *Smaller File* or *Higher Fidelity* for the video captured. There are other options that you may want to investigate, such as the cache settings under the **Cache** tab. You can cache the imagery from a whole project for demonstrations later where you may not have Internet access rather than saving a video file of the Tour.



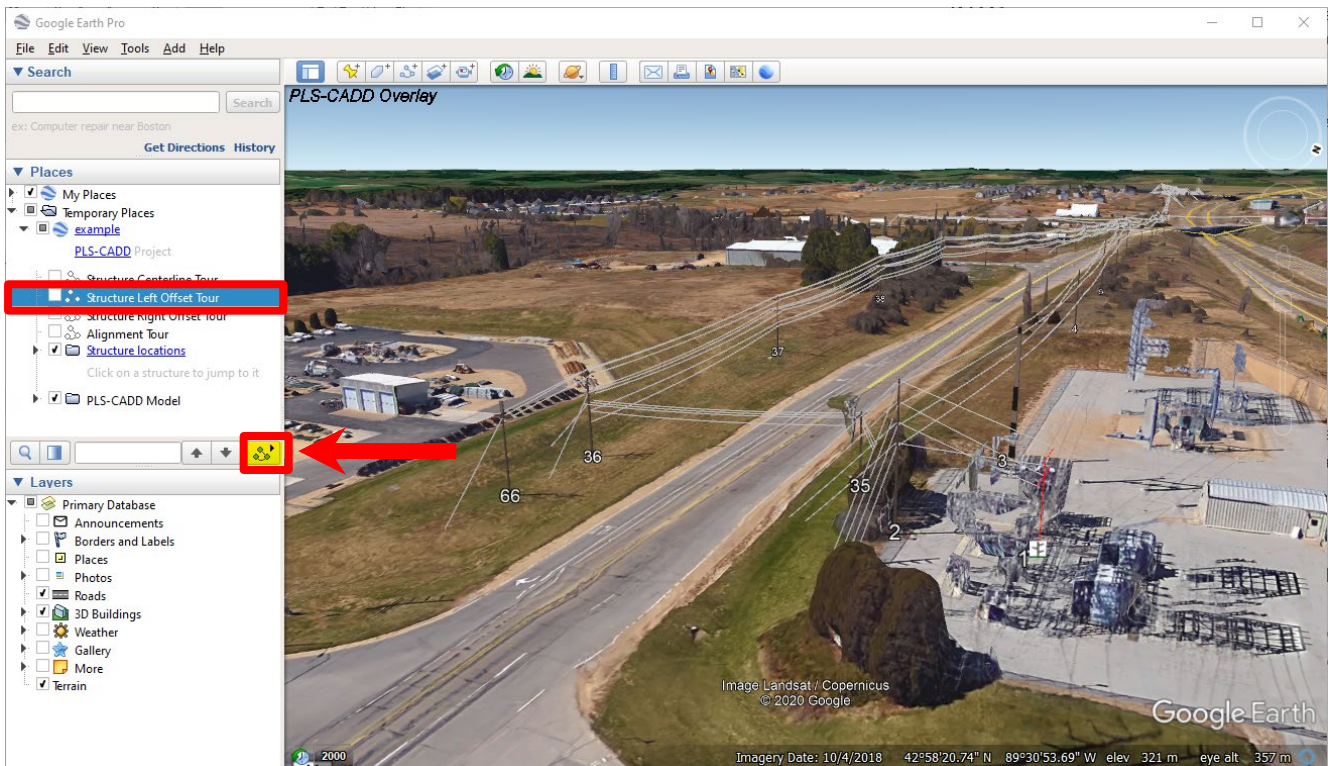
General tab:

Important setting here to allow the hyperlinks to open the **PLS-CADD .xyz** model and the **PLS-POLE** or **TOWER** files are:

- To enable the option to *Show web results in external browser*.
- To *Allow access to local files and personal data*.
- To *Allow cross-origin requests for local content*.

Tour the line

- Double-click on one of the "tours" on the left-hand side of the screen under the line you want to tour. You will be taken to the first structure on your line, hovering and ready to fly.
- To start the Tour, click the "Play Tour" button to start the tour (highlighted in the image below).



- You can make a movie/recording of your tour as well using the Tools/ Movie Maker capability built into Google Earth Pro. However, note that the quality isn't anywhere near as good as it is "live" in Google Earth.

Structure and Section Attributes

To get information or attributes of a structure or a wire section the following steps should be followed:

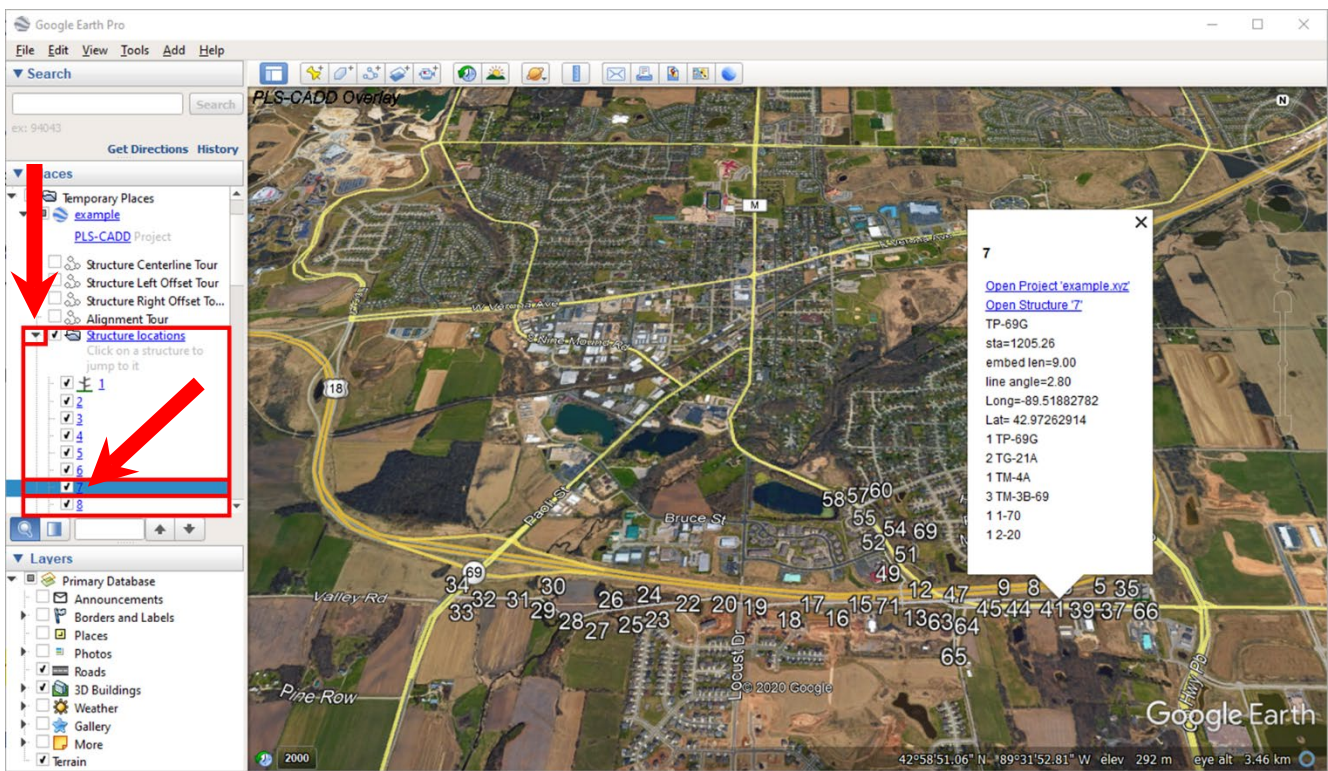
Structure Attributes

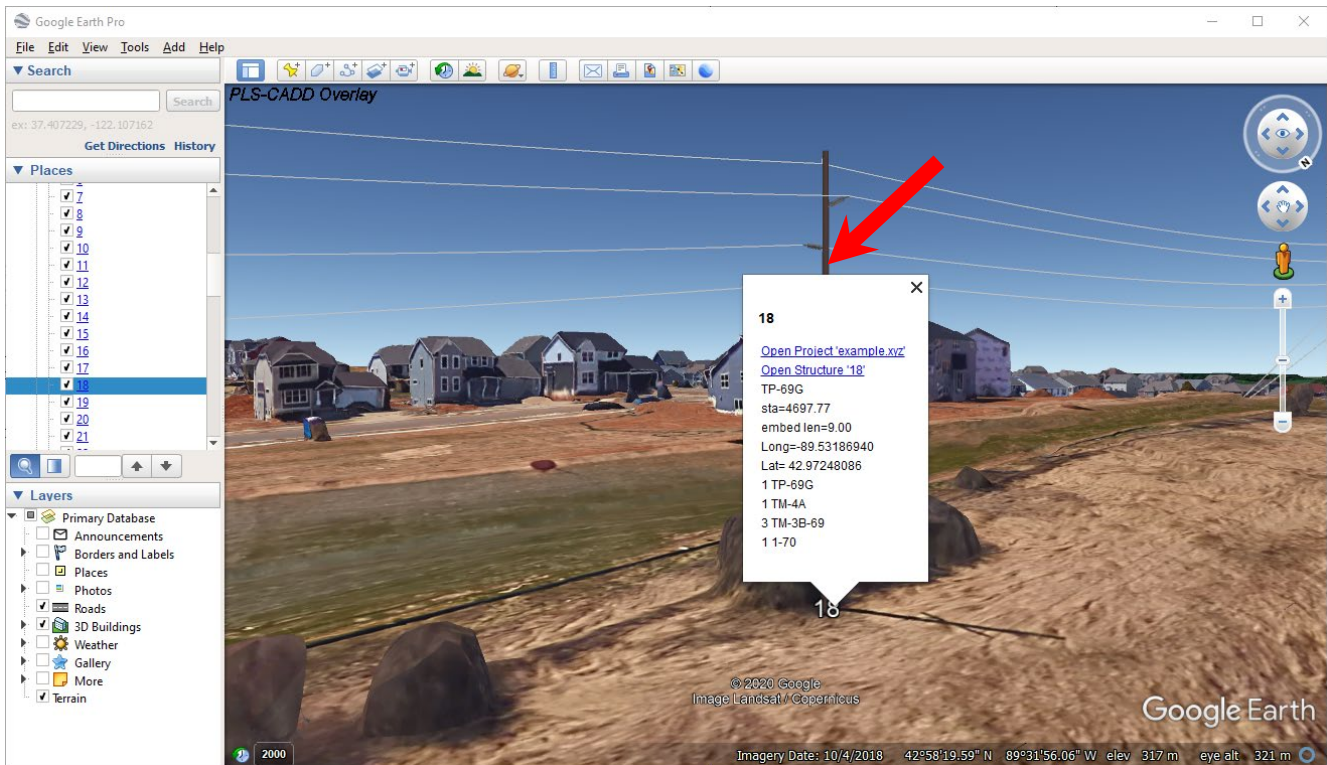
There are two simple methods to get structure attributes:


Firstly, you can navigate to the lines KMZ file in the Places tree control and expand the *Structure locations* tree by clicking on the "▶" in front of that line.

Now simply find the structure number in the expanded tree and click on it. Google Earth will then display the attributes of the structure.

If you double click the structure number, Google Earth will navigate you to the structure.





The second technique to get the structure attributes is to simply click on any part of the rendered structure (for 3D structures) or on the Structure Icon  at the structure base for Method 1 (stick) structures.

The details displayed for structures are:

- A hyperlink to open the .xyz project in **PLS-CADD**.
- A hyperlink to open the structure model in the appropriate structure program (**PLS-POLE** or **TOWER**).
- All the subsequent data/attributes are those selected in **PLS-CADD** under **Drafting/ Structure and Section Labeling/ Sheet Profile View**. Note that the Bill of Materials is one of those options. These are described in the PLS-CADD user manual in Section 5.4.5. In the example, the data selected is:
 - Structure Number
 - Structure Description
 - Station
 - Line Angle (if nonzero)
 - Longitude and Latitude
 - Embedment length
 - Material List – New items

This is a great way to share rich detail to other parties and field crews.

Section Attributes

Similarly, the Section Attributes can be displayed in two ways.

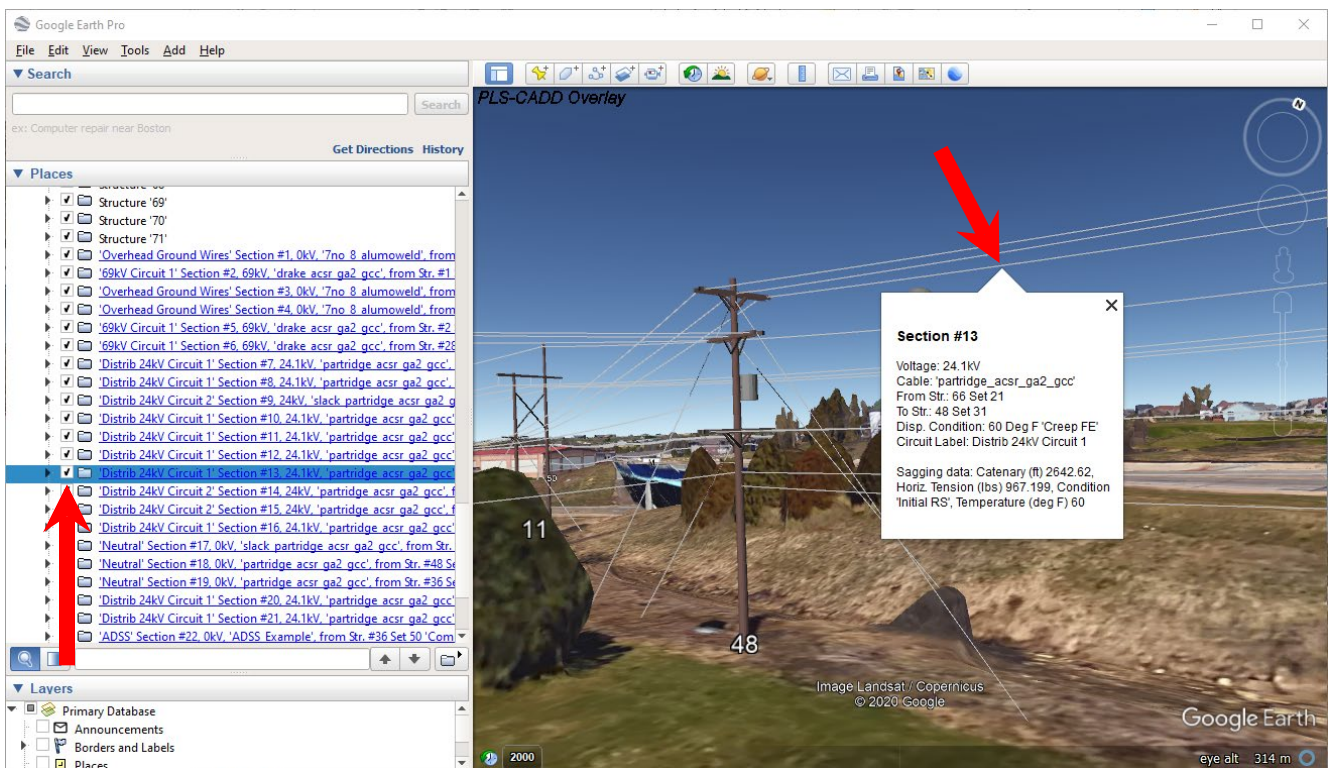
In the first technique, you can navigate to the lines KMZ file in the Places tree control and expand the *PLS-CADD Model* tree by clicking on the "▶" in front of that line.

Now simply find the Section that you are interested in within the expanded tree and click on it. Google Earth will then display the attributes of the section.

The second technique, much like the Structure Attributes, involves clicking directly on any part of the section in the model which will display the attributes.

The details displayed for sections are:

- Voltage
- Cable file
- From structure
- To Structure
- Display Condition
- Circuit Label, and
- Sagging data



PLS-CADD reports exportable to KML/KMZ

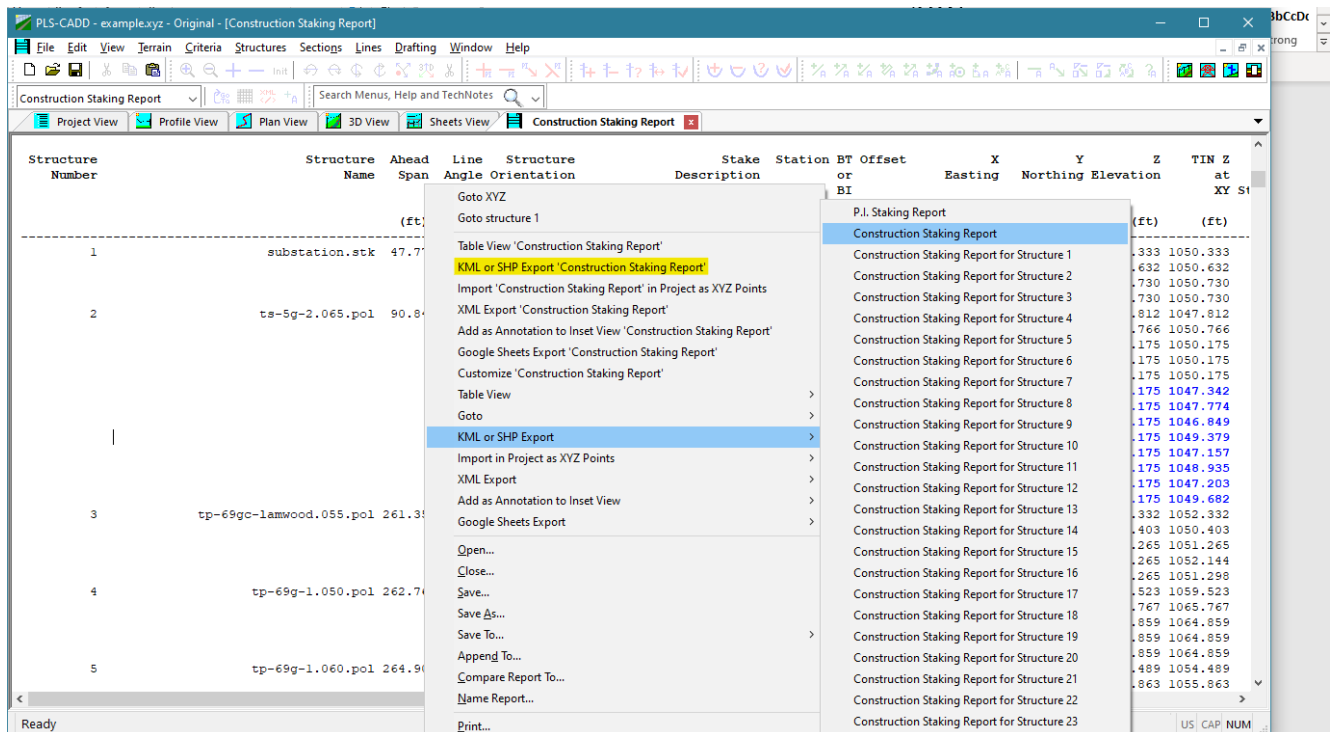
Many reports can now be exported to KML, this includes:

- P.I. Report
- Structure Coordinates Report
- Construction Staking Report
- Leg and Guy Extension Report
- Terrain Clearances by Span Report
- Thermal Rating Report
- Danger Tree Locator Report
- 2D EMF reports
- Line Summary Report:
 - Structure List Report
 - Structure Coordinates Report
 - Structure Attachment Coordinates

A general rule is that any report which contains georeferenced coordinates can typically be exported to a KML file. This ability can greatly enhance any text-based or tabular report to illustrate visually the design outputs. The process to export the files is rather straight-forward.

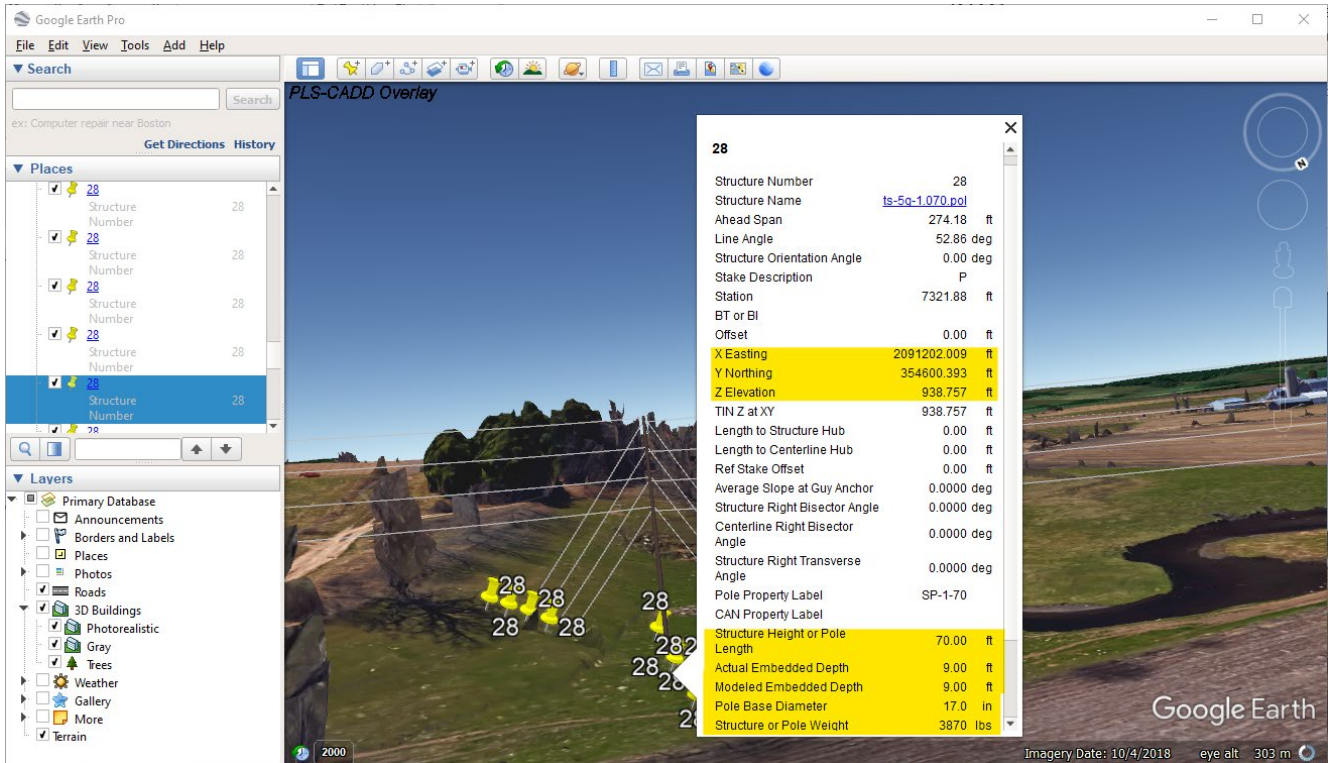
When in the body of a report within **PLS-CADD** right click the mouse, then select KML export and choose the report in question. It will then prompt you to save the file. After naming the file and selecting Save the program will prompt you to see if you would like to view the report in the default system KML viewer which can be set to Google Earth. This will then automatically launch the Google Earth Viewer and display the selected report.

This is demonstrated for **Lines/ Reports/ Construction Staking Report** below:



Save the KMZ/KML to the desired location and then open the file in Google Earth (File / Open). Once loaded, you can click on any of the Placemarks/markers and see the attributes associated with the Construction Staking Report listed. You will see many data points but also a hyperlink to open the structure file in either **PLS-POLE** or **TOWER**.

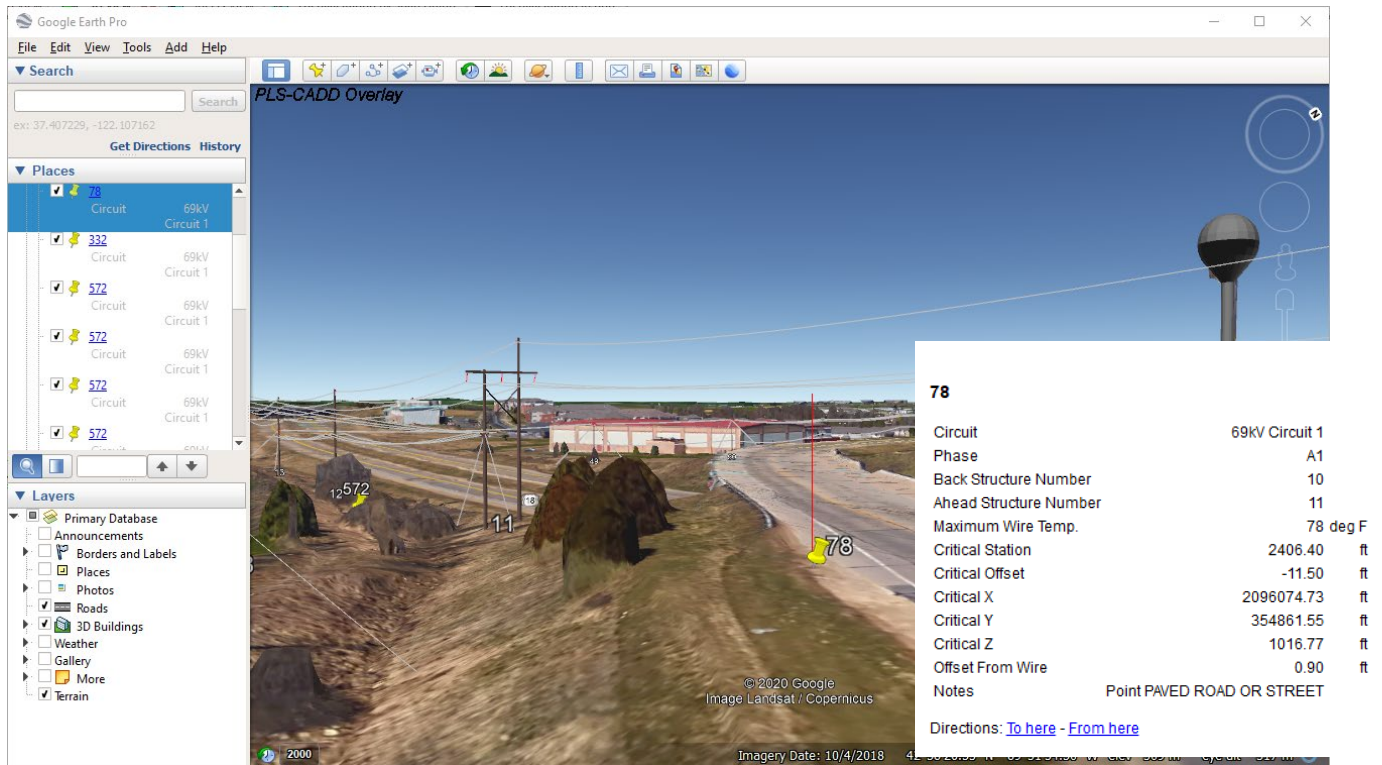
Notice below that not only are the geographical coordinates of the staking location given, but the pole class, pole length, base diameter, and structure weight are listed as well.



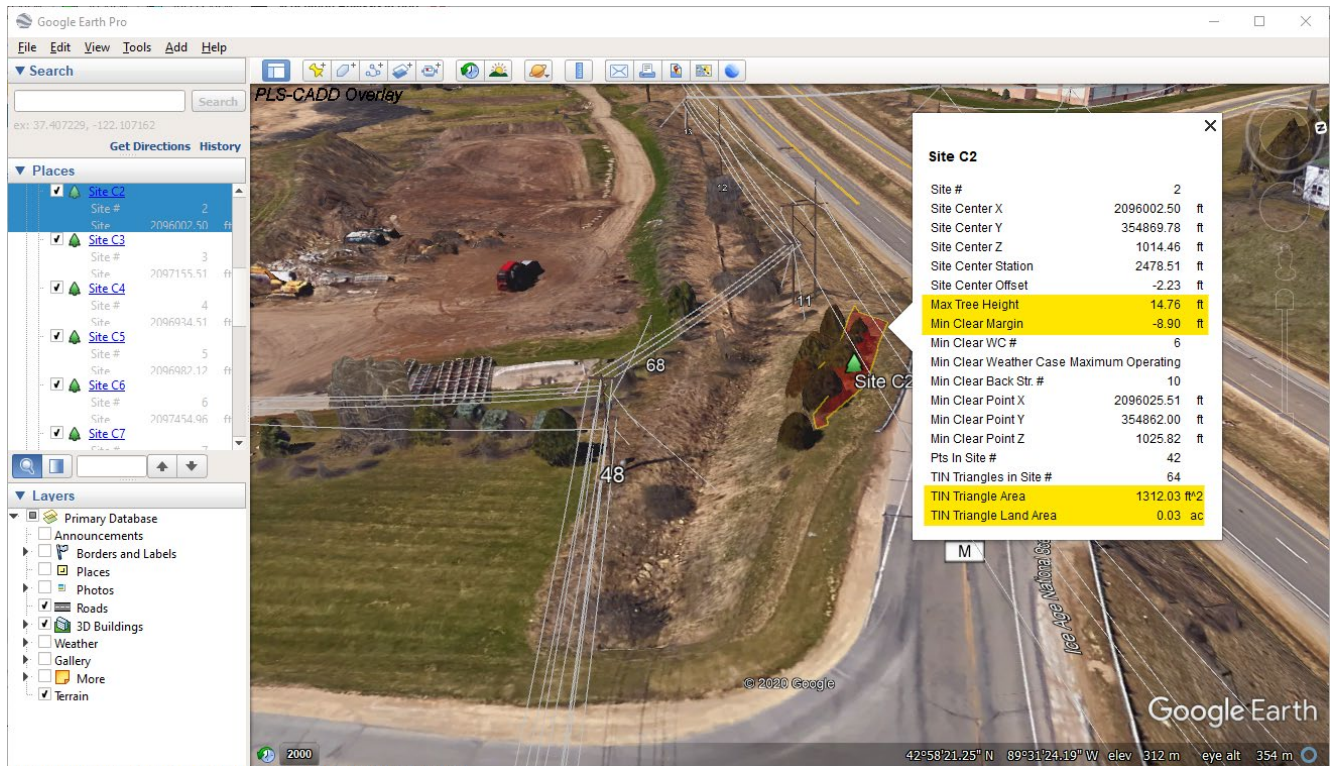
Below is an example of the KML created by right clicking from the **Lines/ Reports/ Thermal Rating Report**.

Note that if markers are displayed in the 3D view in **PLS-CADD**, they will be exported with the **PLS-CADD** model KML export as well (**File/ Export/KMZ (Google Earth)**).

This marker is the red line indicating the clearance available when the phase conductor is at 78°F in the image



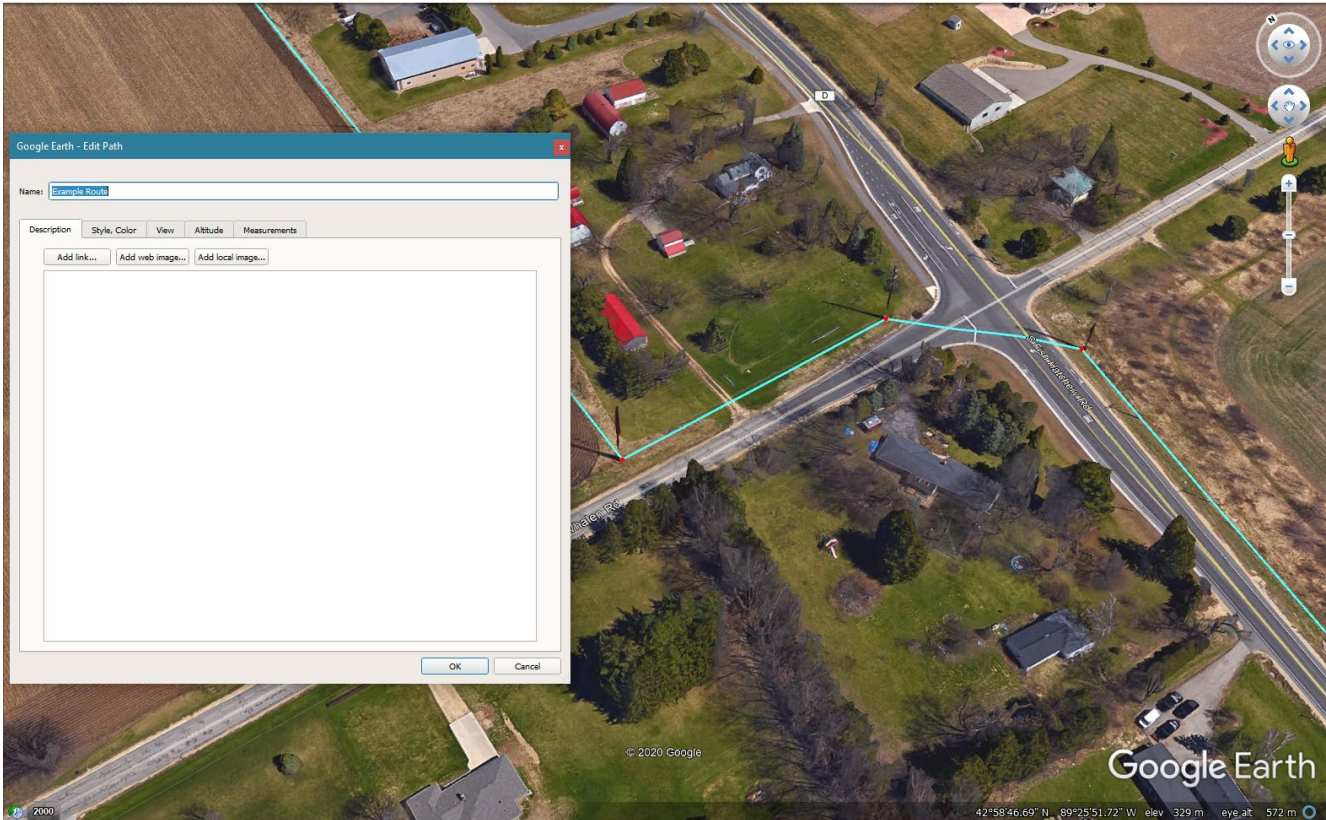
Below is an example of the vegetation violations grouped into work sites and exported to a KMZ/KML file, as discussed in the [Wildfire Risk Assessment Using PLS-CADD](#) technote and the [PLS-CADD Vegetation Work Sites](#) video, using the **Lines/ Reports/ Danger Tree Locator** functionality in **PLS-CADD** to detect Grow-In and Falling Tree clearance violations. This typically requires vegetation survey points to have been collected (typically by LIDAR survey).



By using these Google Earth export functions in **PLS-CADD**, information from your **PLS-CADD** model can be shared with others for informational, construction and vegetation management purposes quickly and easily.

Import data from KML/KMZ

Importing terrain data from a KML/KMZ file is a straightforward process and is briefly described in Appendix D.9 of the PLS-CADD Manual. **PLS-CADD** will create a survey point at each **Placemark** and at each “point” or “bend” along any **Path** (LineString) elements in the file. The points along a path can be visualized as the red dots when you edit a Path by right clicking on it in the Places tree and select "Properties".

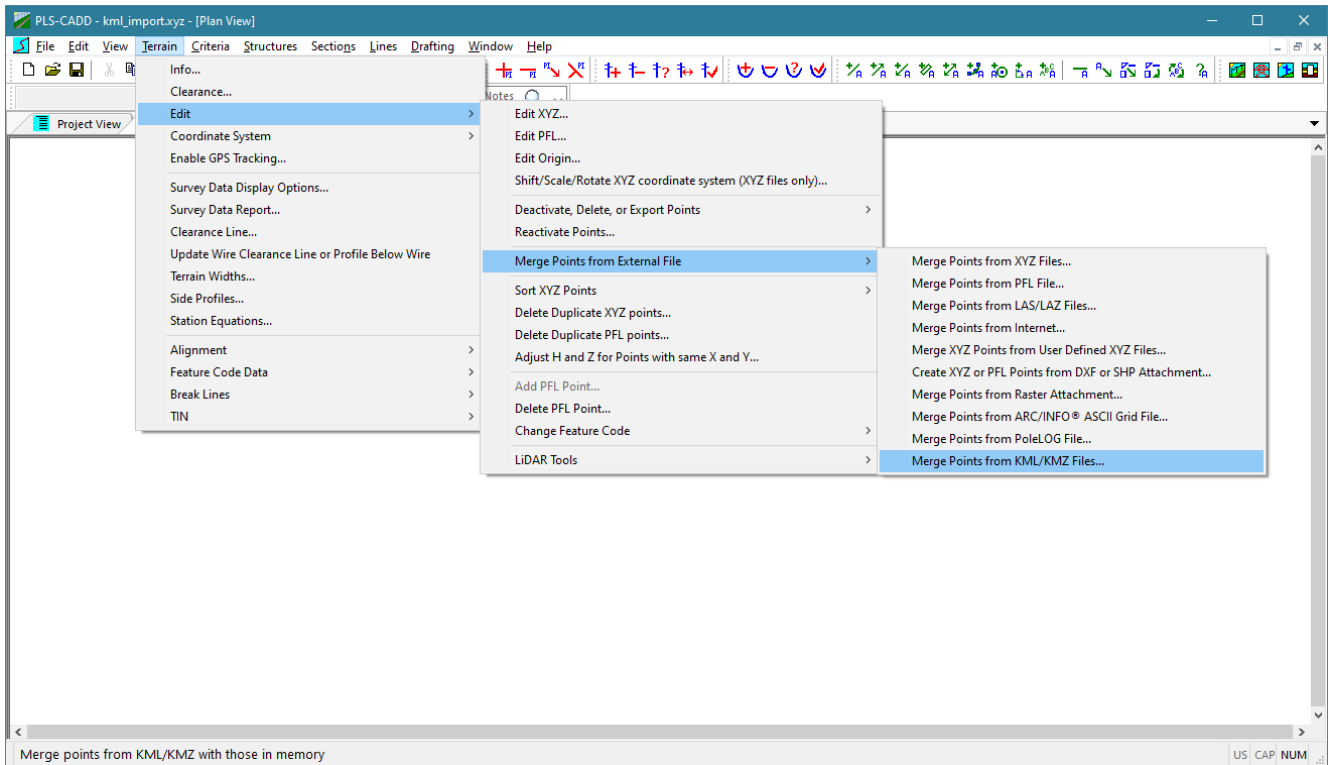


It is good practice to keep your KML/KMZ files containing **only** the information you wish to bring into PLS-CADD.

Once you have started creating your project you should ideally have:

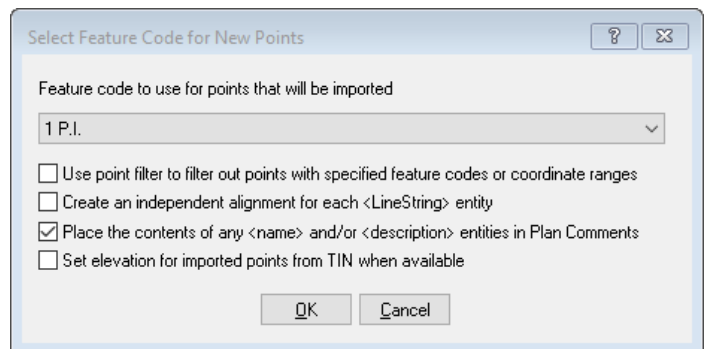
- Loaded a FEA file (**Terrain/ Feature Code Data/ Load FEA**)
- Defined the Project Coordinate System (**Terrain/ Coordinate System/ Define**)

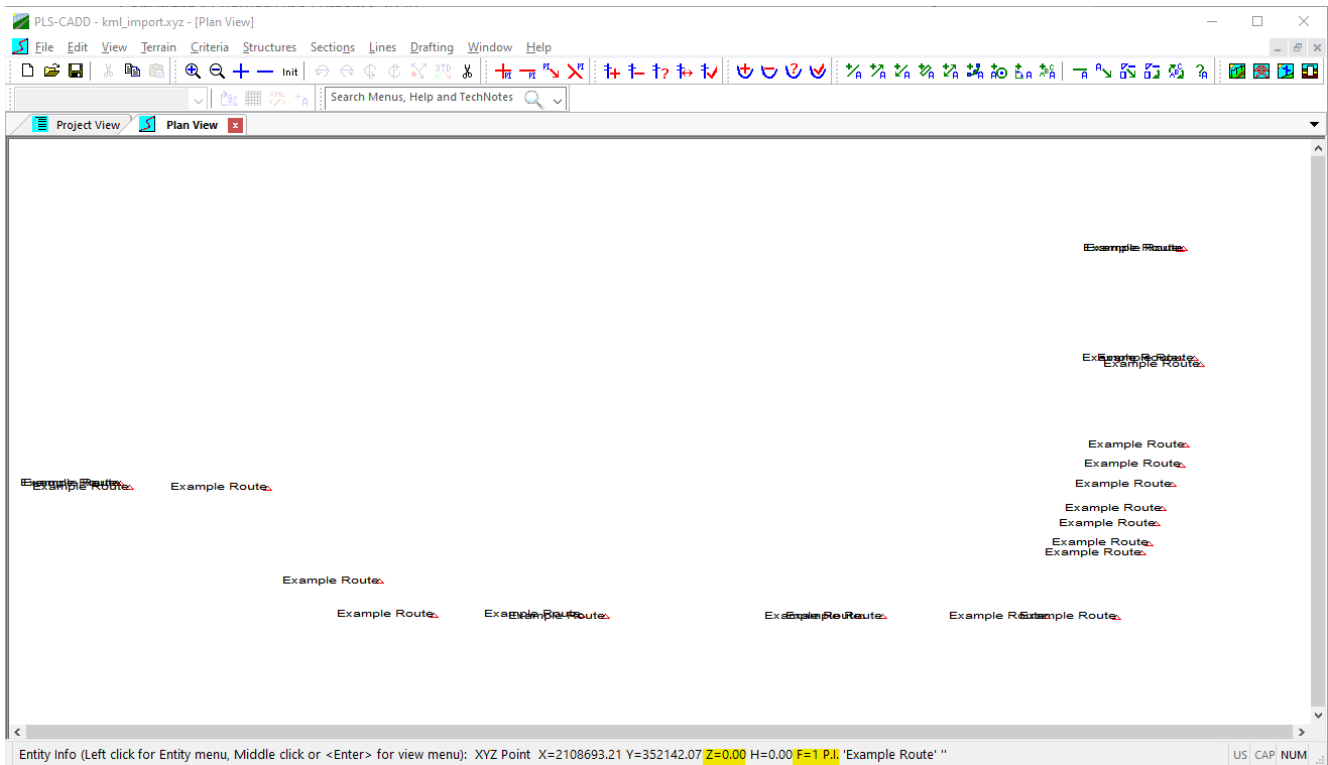
At this point you are able to accurately import the KML/KMZ file. To do so, use the **Terrain/ Edit/ Merge Points from External File/ Merge Points from KML/KMZ files...** command.



After finding and selecting the KML/KMZ file you wish to use, the *Select Feature Code for New Points* dialog box will display.

In this dialog you can select the feature code that you would like for the imported points from the picklist. You can choose whether to use the point filter upon import of the points and /or create an alignment based on each LineString entity in the file. The third tick box (selected in the figure) will place the contents of any name and/or description entities in the Plan Comments for the xyz points created. The bottom option will use the elevation from the TIN as the Z value for points created from the KMZ file.





Once the points have been created, a range of other **PLS-CADD** features will very quickly provide you with a usable alignment and terrain data for making design determinations.

For example:

- **Terrain/ Alignment/ Automatic Alignment**
- **Terrain/ Edit/ Merge Points from External File/ Merge Points from Internet** (See video here [Download XYZ Point Data From Internet](#))
- **Terrain/ TIN/ Create TIN** and **Terrain/ TIN/ Create Interpolated Points**
- Attaching aerial imagery from online sources (See video for [PLS-CADD Web Mapping Services](#))