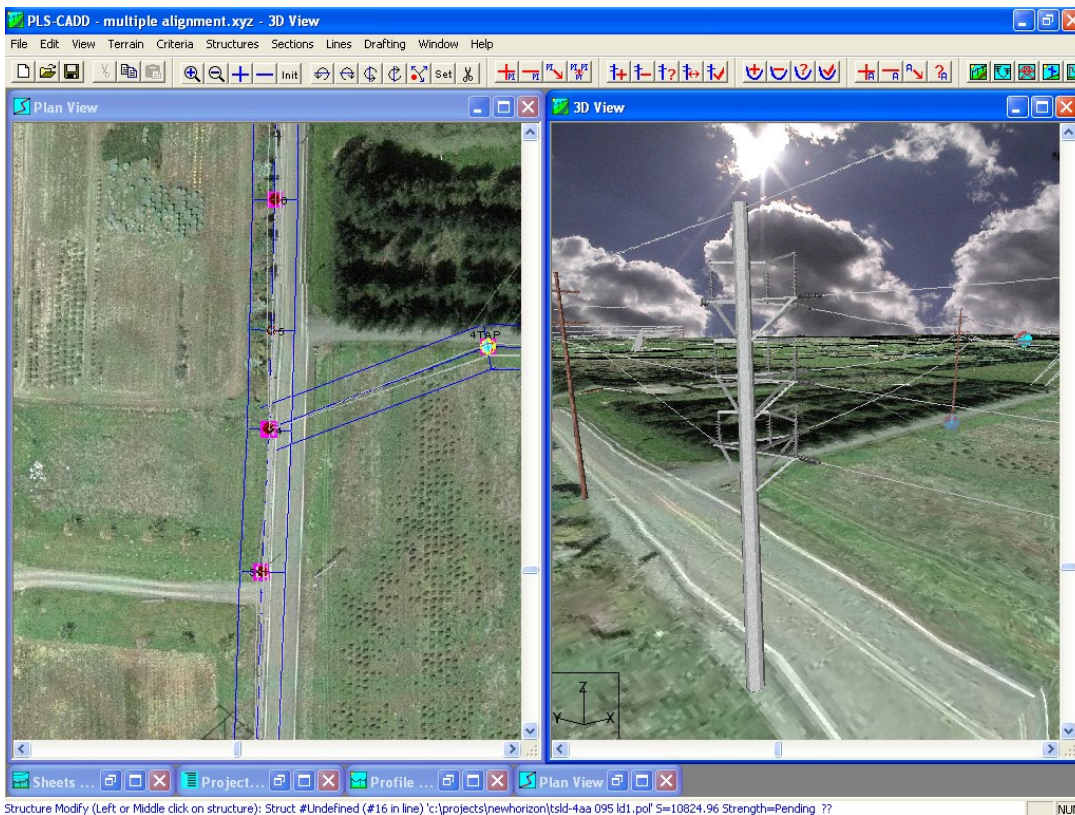


PLS-CADD Seminar

Design of Overhead Transmission and Distribution Lines using PLS-CADD



October 9 – 13, 2023

1:00 PM to 5:30 PM Monday
8:30 AM to 4:30 PM Tues.-Thur.
8:30 AM to 12:00 PM Friday

at
Power Line Systems
5400 King James Way
Suite 300
Madison, WI 53719

POWER LINE[®]
S Y S T E M S

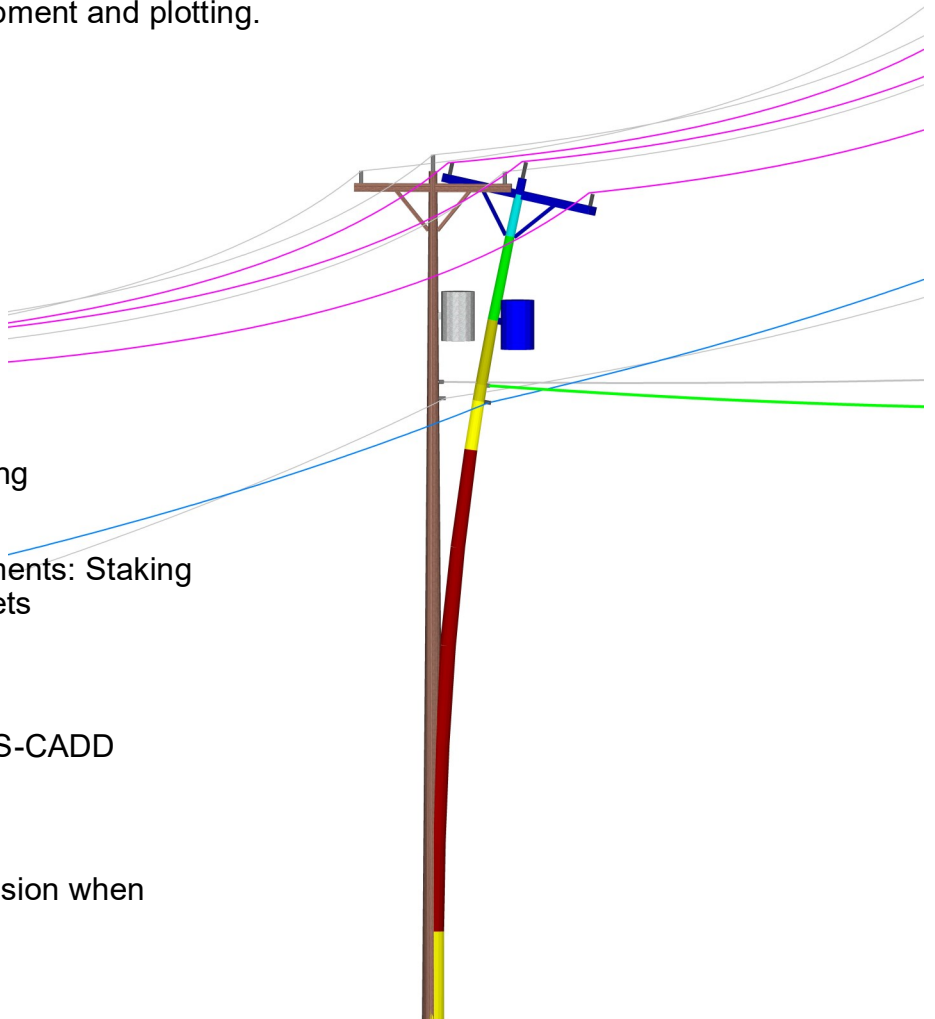
Power Line Systems
5400 King James Way
Suite 300
Madison, WI 53719
Phone: (608) 238-2171
Fax: (608) 238-9241
<https://www.powerlinesystems.com>

**Learn the Industry
Standard in Overhead Line
Design Software**

PLS-CADD is the industry standard in overhead line design and drafting software. This course will teach the attendee how to use PLS-CADD on a transmission or distribution project from start to finish, including importing survey data, criteria development, structure design, conductor sagging and Plan & Profile drawing development and plotting.

Topics Covered

- General Overview
- Survey data/Terrain modeling
- Engineering
 - Design criteria
 - Sag-tension calculations
 - Clearance calculations
 - Structure calculations
 - Manual spotting and stringing
 - Automatic spotting
- Generating construction documents: Staking Tables and Plan & Profile Sheets
- PLS-CADD/LITE
- PLS-POLE
- PLS-POLE integration with PLS-CADD
- Transmission Lines
- Distribution Lines
- Use of Finite Element Sag-Tension when Ruling Span is not accurate



Who Should Attend?

This course is open to all engineers and technicians whose companies currently use PLS-CADD or are considering purchasing it. The attendee should have some basic understanding of overhead line design concepts as the class focuses on the use of the software and not on the fundamentals of line design.

Cost

The class costs \$2200 per person.

More Information

A registration form is on the back of this brochure. Seats are limited to the first 25 registrants. We must receive payment and your registration form in order to reserve your seat.

Please see our web site at <https://www.powerlinesystems.com/classes> for other classes.

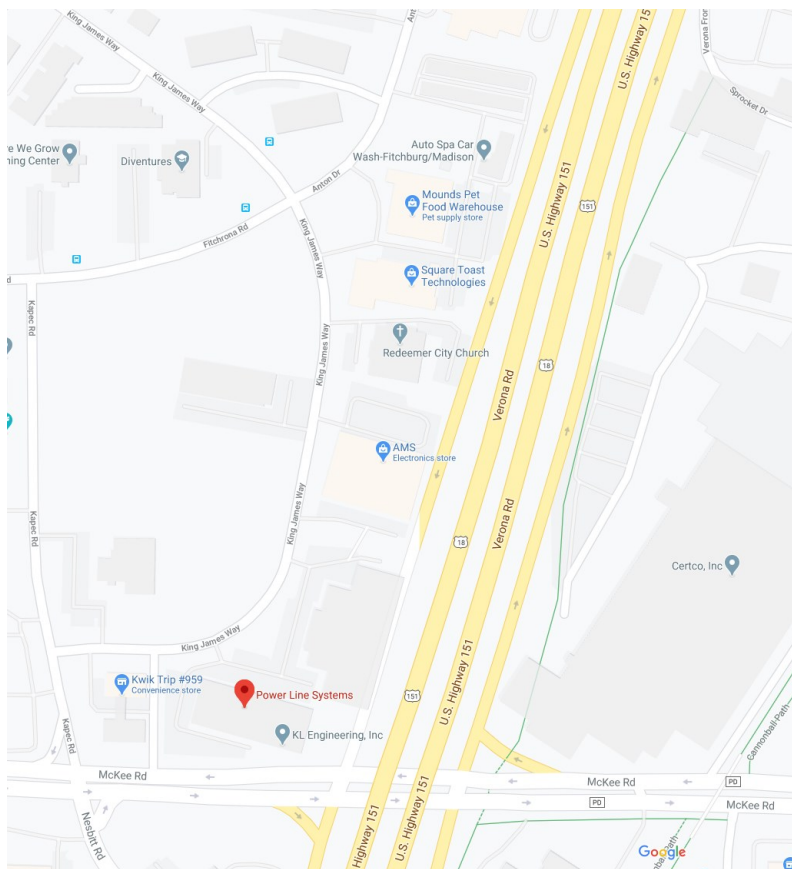
Instructor



The course will be conducted by Jesse Kohler, P.E., Power Line Systems. He has more than 15 years of experience in transmission line design ranging from voltages of 69kV through 345kV and using the PLS software suite. Jesse is a registered Professional Engineer, is an active member of the IEEE Power Energy Society, and currently sits on Subcommittee 4 of the NESC. Jesse has been with Power Line Systems for more than 10 years providing technical support to PLS users in over 130 different countries around the world. In addition to technical support he also performs software testing, participates in the development of new software features, and leads PLS-CADD training courses. He has an extreme in-depth knowledge of the software's functionality and implementation.

Details

The class will be held from 1:00 PM to 5:30 PM Monday, 8:30AM to 4:30PM Tuesday through Thursday and from 8:30 AM to 12:00 PM on Friday (training room opens 15 minutes before class start each day). The course will be conducted at Power Line Systems headquarters in Madison, Wisconsin (see map below). Lunch will be provided Tuesday through Thursday. Attendees are responsible for all other costs incurred including lodging. Please see <https://www.powline.com/visiting.html> for a detailed map of Power Line Systems location and listings of area hotels.



Computers and Software Provided

This is a 'hands-on' class where attendees will be learning by actually using PLS-CADD. A computer and the latest PLS-CADD software will be provided by Power Line Systems for each attendee for the duration of the class.

Any audio or video recording of the class is strictly prohibited.



5400 King James Way, Suite 300
Madison, Wisconsin 53719, USA
Phone: (608) 238 2171 Fax: (608) 238-9241
<https://www.powerlinesystems.com>
info@powerlinesystems.com

PLS-CADD Seminar Registration Form

October 9 - 13, 2023 in Madison, Wisconsin, USA

Each attendee must submit a completed form to register – please print.

Please fax completed forms to (608) 238-9241

Attendee Information

Name (First/Last) _____ Phone _____
Company _____ Fax _____
Address _____ E-Mail _____
City _____ State _____ Zip _____

Payment Information

Full payment is required prior to the class and must be received in order to reserve a seat. Seats are reserved on a first-paid first-reserved basis and are limited to 25 people.

Check No. _____

I authorize Power Line Systems to charge my ___MasterCard ___Visa for the amount of \$2200. Note that Power Line Systems can only accept MasterCard or VISA credit cards. All attendees will be supplied with a computer, the PLS-CADD software and hardware key to use during the class.

Cardholder Name _____ Signature _____

Card No. _____ Expiration Date _____

CVC No. _____

Credit Card Billing Address _____

(if different than above) _____

City _____ State _____ Zip _____

Cancellation Policy

Confirmed registrants who do not participate or who cancel after September 9, 2023, will forfeit their entire registration fee. Power Line Systems reserves the right to cancel the training session and will refund the entire class registration fee in the unlikely event this happens.