



# Automatic Model Builder (AMBER)

Kevin Brzys, PE

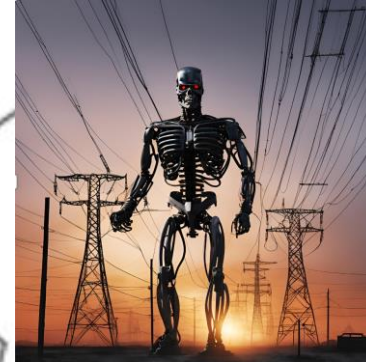
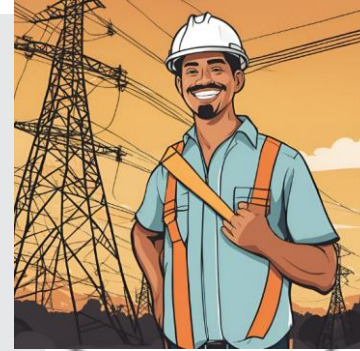
© 2024 Bentley Systems, Incorporated



# Introduction to the Automatic Model Builder (AMBER)

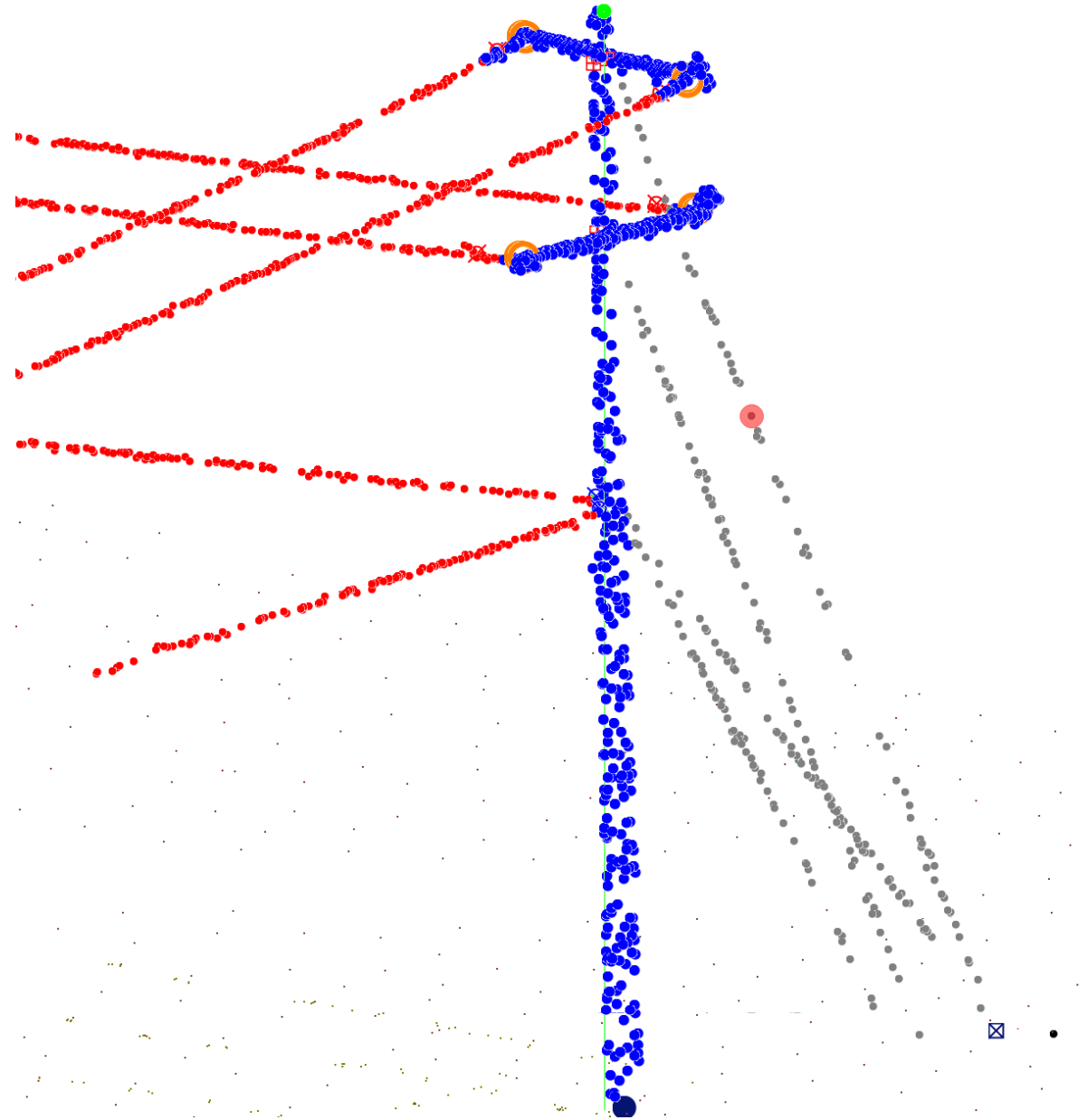
## AMBER

- Released in v19.04 of PLS-CADD
- In General Release v20.00 of PLS-CADD
- Automatically builds PLS-CADD models from LiDAR
- Classified LiDAR required
- Automatically Creates:
  - Alignment(s)
  - Method 1 Structures
  - String Sections
- Requires Optimum Spotting license for PLS-CADD



# Classified LiDAR

- Required feature codes:
  - structure points
  - wire point
  - wire attachment points
- Optional feature codes:
  - Structure top
  - Structure bottom



# Automatic PLS-CADD modeling process with AMBER

- Requires new project
  - No alignment
  - No sections/structures
- **Terrain/Automatic Model Builder (AMBER)...**
  - **Feature Codes tab**
  - Define Structure, Wire & Wire Attachments
  - Top/Bottom Structure Optional
  - Define Stringing Options
  - **Structure Model tab**
- Review Results
- Let's build a model with AMBER....

