



# PLS-GRID Analytics

Tim Cashman, PE

© 2024 Bentley Systems, Incorporated

**POWER LINE**<sup>®</sup>  
S Y S T E M S  
Part of Bentley Systems

**Bentley**<sup>®</sup>

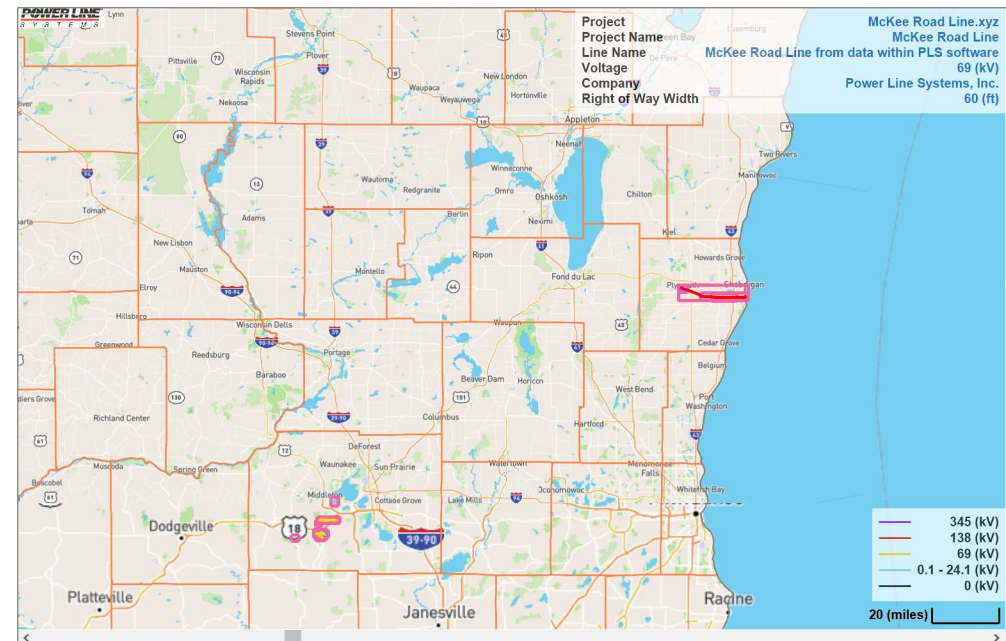
# What are PLS-GRID Analytics

Allows running of PLS-CADD reports across multiple projects

Projects must be saved on a PLS-GRID server

Includes PLS-CADD and PLS-CADD/ Lite models

Only available when using PLS-GRID desktop client



# Current PLS-GRID Analytics Reports

Structure Usage

Thermal Rating

Danger Tree

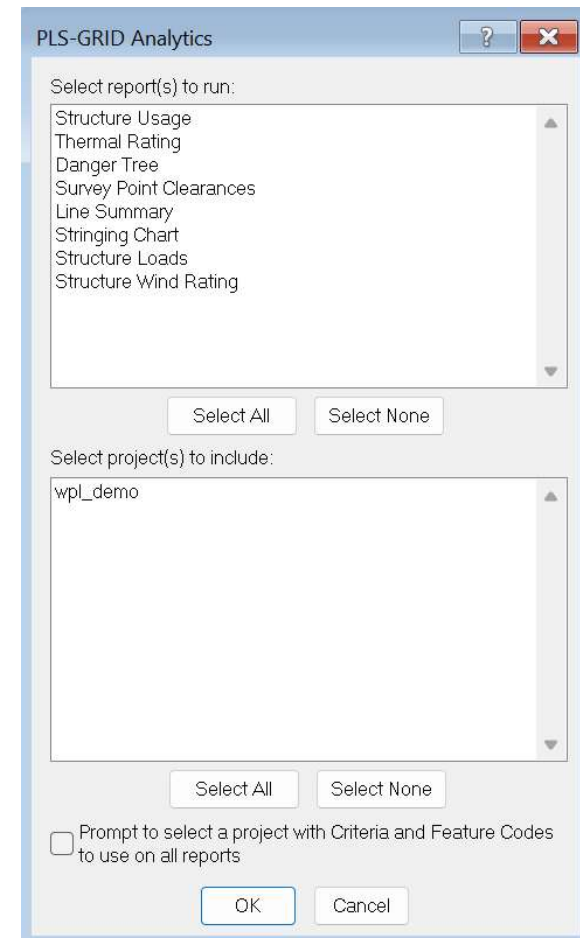
Survey Point Clearances

Line Summary

Stringing Chart

Structure Loads

Structure Wind Rating



# Selecting Projects and Reports

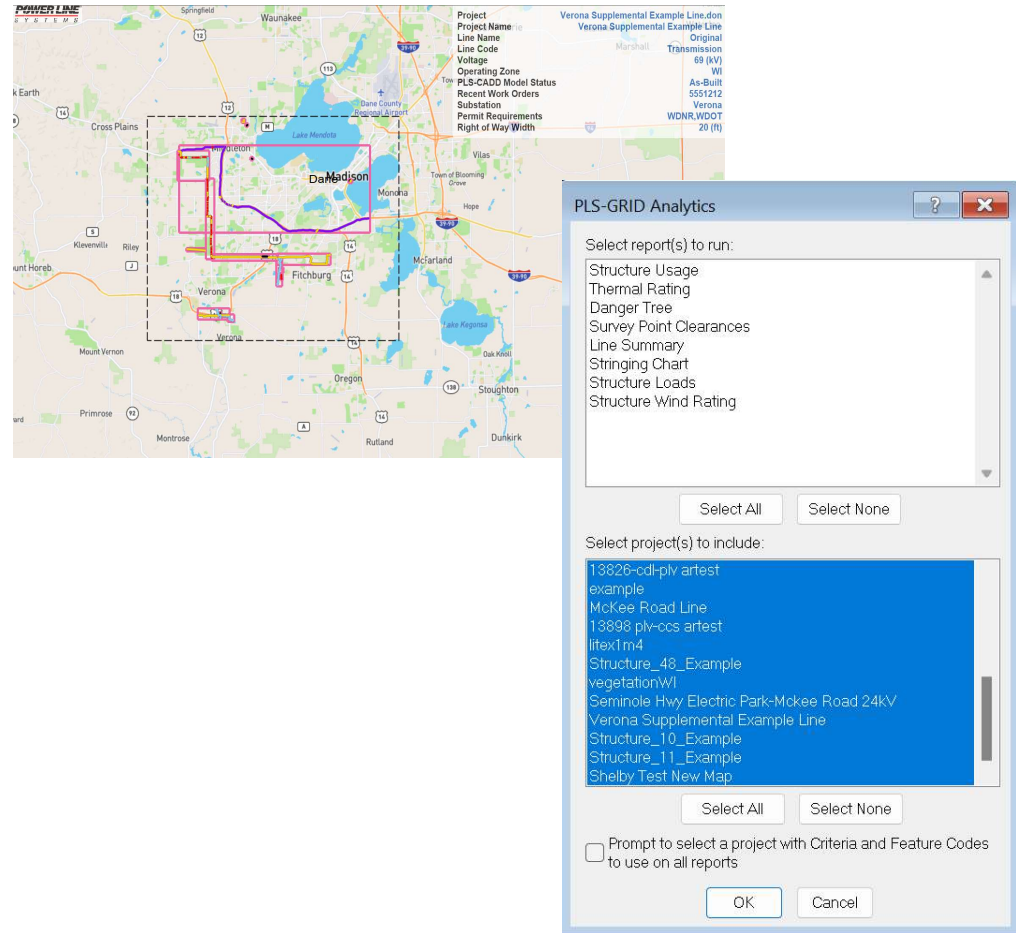
Graphically select projects from map and fine tune dialog

Can run single or multiple reports

Each report will open a report dialog to enter analysis parameters

Some reports not applicable to some projects

Option to use common Criteria and Feature Code file



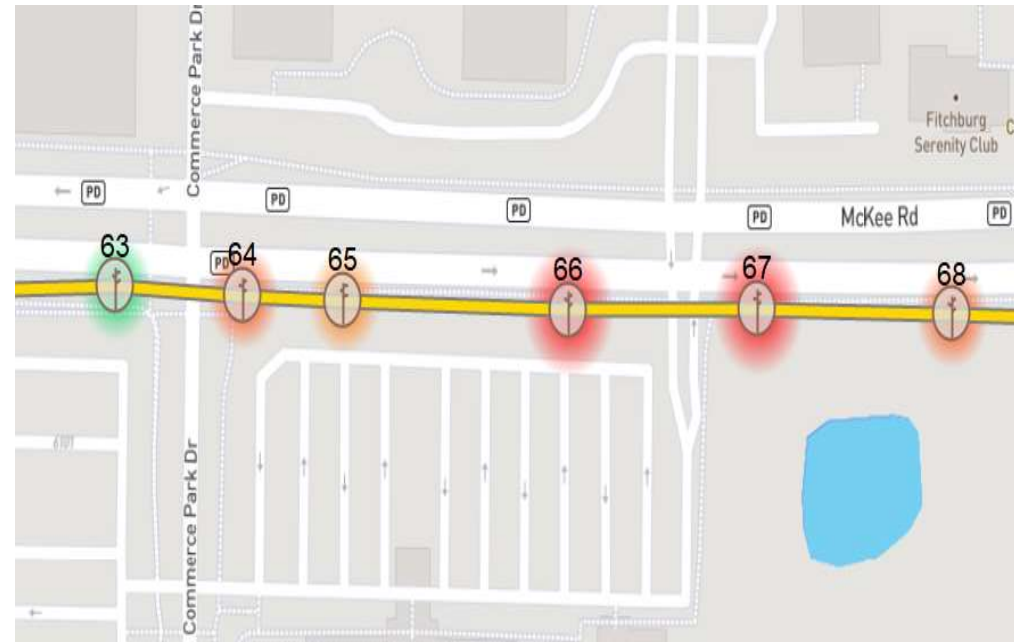
# Running Analytics Reports

Analysis is run on local computer, not the PLS-GRID server

Projects downloaded to Workspace folder

Results are uploaded to PLS-GRID server and available in Grid map view

Some reports also generate graphical results in GRID map view



# Demonstration